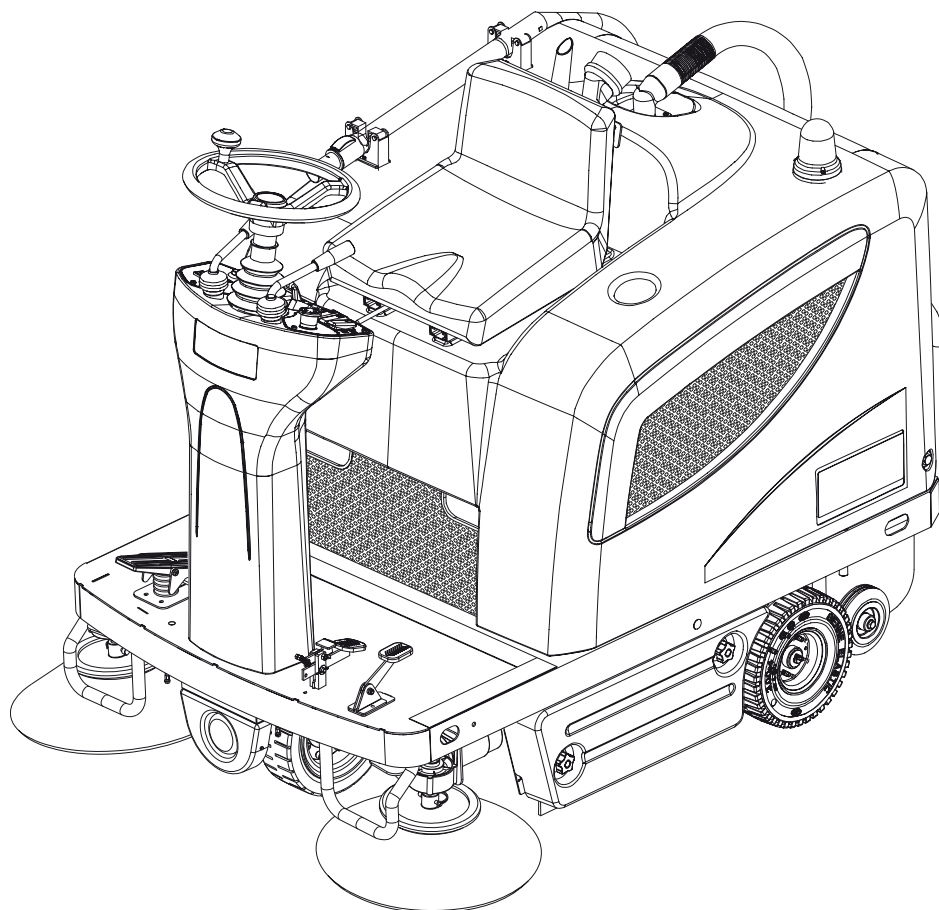


Terra™ 4300B



SERVICE MANUAL
Advance model: 9084317010

INDEX

GENERAL INFORMATION	3
MACHINE LIFTING	3
MACHINE TRANSPORTATION	3
PUSHING OR TOWING THE MACHINE	3
OTHER REFERENCE MANUALS AVAILABLE FOR Terra™ 4300B	3
SAFETY	4
GENERAL SAFETY PRECAUTIONS	4
TECHNICAL DATA	6
DIMENSIONS	8
MAINTENANCE	9
SCHEDULED MAINTENANCE	9
SCHEDULED MAINTENANCE TABLE	9
MACHINE NOMENCLATURE	11
SWEEPING SYSTEM	13
MAIN BROOM HEIGHT CHECK AND ADJUSTMENT	16
MAIN BROOM DISASSEMBLY/REASSEMBLY	16
SIDE BROOM HEIGHT CHECK AND ADJUSTMENT	17
SIDE BROOM DISASSEMBLY/REASSEMBLY	19
SIDE BROOM LIFTING CABLE DISASSEMBLY/REASSEMBLY	20
MAIN BROOM DRIVING BELT VISUAL INSPECTION	22
MAIN BROOM DRIVING BELT DISASSEMBLY/REASSEMBLY	23
MAIN BROOM GAS SPRING DISASSEMBLY/REASSEMBLY	24
MAIN BROOM PULLEY BEARING REPLACEMENT	25
MAIN BROOM MOTOR ELECTRICAL INPUT CHECK	26
MAIN BROOM MOTOR CARBON BRUSH CHECK AND REPLACEMENT	27
MAIN BROOM MOTOR DISASSEMBLY/REASSEMBLY	28
SIDE BROOM MOTOR ELECTRICAL INPUT CHECK	29
SIDE BROOM MOTOR CARBON BRUSH CHECK AND REPLACEMENT	30
SIDE BROOM MOTOR DISASSEMBLY/REASSEMBLY	31
SIDE BROOM ACTIVATION MICROSWITCH ADJUSTMENT AND DISASSEMBLY/REASSEMBLY	32
MAIN BROOM ACTIVATION MICROSWITCH ADJUSTMENT AND DISASSEMBLY/REASSEMBLY	33
TROUBLESHOOTING	34
SKIRT	31
SKIRT HEIGHT AND OPERATION CHECK AND ADJUSTMENT	34
SIDE SKIRT DISASSEMBLY/REASSEMBLY	36
REAR SKIRT DISASSEMBLY/REASSEMBLY	37
FRONT SKIRT DISASSEMBLY/REASSEMBLY	38
FRONT SKIRT LIFTING CABLE DISASSEMBLY/REASSEMBLY	39

INDEX

DUST AND DEBRIS COLLECTION SYSTEM	37
DUST FILTER CLEANING AND INTEGRITY CHECK	37
FILTER SHAKER OPERATION CHECK	39
FILTER SHAKER MOTOR DISASSEMBLY/REASSEMBLY	39
VACUUM FAN DISASSEMBLY/REASSEMBLY	40
POWER VACUUM FAN DISASSEMBLY/REASSEMBLY	
TROUBLESHOOTING	42
STEERING AND BRAKING SYSTEM	43
STEERING CHAIN CHECK AND CLEANING	43
STEERING CHAIN DISASSEMBLY/REASSEMBLY	44
SERVICE AND PARKING BRAKE CHECK AND ADJUSTMENT	45
BRAKE CONTROL CABLE REPLACEMENT	46
BRAKE SYSTEM DISASSEMBLY/REASSEMBLY	47
DRIVE SYSTEM	48
DRIVE SYSTEM DRIVE MOTOR ELECTRICAL INPUT CHECK	48
DRIVE MOTOR CARBON BRUSH CHECK AND REPLACEMENT	49
DRIVE SYSTEM DISASSEMBLY/REASSEMBLY	50
DRIVE MOTOR DISASSEMBLY/REASSEMBLY	51
FORWARD/REVERSE GEAR PEDAL DISASSEMBLY/REASSEMBLY	52
FORWARD/REVERSE GEAR PEDAL POTENTIOMETER CHECK AND ADJUSTMENT	53
TROUBLESHOOTING	54
TABLE OF DRIVE BOARD ERROR CODES	54
OTHER SYSTEMS	56
SCREW AND NUT TIGHTENING CHECK	56
FRONT COVER DISASSEMBLY/REASSEMBLY	57
SEAT RUNNING CONSENT MICROSWITCH DISASSEMBLY/REASSEMBLY	59
ELECTRICAL SYSTEM	60
BATTERY CHARGING	60
FUSE REPLACEMENT	60
DRIVE ELECTRONIC BOARD DISASSEMBLY/REASSEMBLY	60
TROUBLESHOOTING	61
COMPONENT LOCATION	61
WIRING DIAGRAM	64

GENERAL INFORMATION

GENERAL INFORMATION

CONVENTIONS

Front, rear, right or left indications in this manual are intended with reference to the operator's driver's seat position.

MACHINE LIFTING

**WARNING!**

Do not work under the lifted machine without supporting it with safety stands.

MACHINE TRANSPORTATION

**WARNING!**

Before transporting the machine, make sure that:

- *All doors and carters are closed*
- *The ignition key is not inserted*
- *The machine is securely fastened to the means of transport*

PUSHING OR TOWING THE MACHINE

**WARNING!**

When pushing or towing the machine, carefully follow the relevant instructions given in the User Manual. If you do not follow the given instructions the machine can be damaged.

OTHER REFERENCE MANUALS AVAILABLE FOR Terra™ 4300B

The following manuals are available at Advance Literature Service Department:

- **Terra™ 4300B** - Part List - Advance Form Number 1464014000
- **Terra™ 4300B** - User Manual - Advance Form Number 1464015000

- Installation instruction for Kit remote vacuum - Advance Form Number 146 2523 000
- Installation instruction for Kit Head light - Advance Form Number 1463974000
- Installation instruction for Kit brush bumper - Advance Form Number 1464060000
- Installation instruction for Kit overhead guard - Advance Form Number 146 2738 000
- Installation instruction for Kit carpet - Advance Form Number 1464103000
- Installation instruction for Kit Warning light - Advance Form Number 146 2693 000

GENERAL INFORMATION

SAFETY

Advance uses the following symbols to indicate potentially dangerous situations. Always read this information carefully and take all necessary precautions to safeguard people and property.

**DANGER!**

It indicates a dangerous situation with risk of death for the operator.

**WARNING!**

It indicates a potential risk of injury for people.

**CAUTION!**

It indicates a caution or a remark related to important or useful functions. Pay the greatest attention to the paragraphs marked by this symbol.

**NOTE**

It indicates a note related to important or useful functions.

**CONSULTATION**

It indicates the necessity to refer to the User Manual before performing any procedure.

GENERAL SAFETY PRECAUTIONS

Specific warnings and cautions used to indicate potential damage to people and machines are shown below.

**DANGER!**

- **Before performing any maintenance, repair, cleaning or replacement procedure disconnect the battery connector, remove the ignition key and engage the parking brake.**
- **This machine must be used by properly trained operators only. Children or disabled people cannot use this machine.**
- **Sharp turns must be made at slowest possible speed. Avoid abrupt turns on incline.**
- **Keep the battery away from sparks, flames and incandescent material. During the normal operation explosive gases are released.**
- **Do not wear jewelry when working near electrical components.**
- **Do not work under the lifted machine without supporting it with safety stands.**
- **When working under the open hood, ensure that it cannot be closed by accident.**
- **Do not operate the machine near toxic, dangerous, flammable and/or explosive powders, liquids or vapours: This machine is not suitable for collecting dangerous powders.**
- **When lead batteries (WET) are installed on this machine, do not tilt the machine more than 30° from its horizontal position to prevent the highly corrosive acid to leak out of the batteries. When the machine is to be tilted to perform maintenance procedures, remove the batteries.**
- **If the machine is equipped with lead (WET) batteries, battery charging produces highly explosive hydrogen gas. Keep the hood open when charging the batteries and perform this procedure in well-ventilated areas and away from naked flames.**

GENERAL INFORMATION

**WARNING!**

- Carefully read all the instructions before performing any maintenance/repair procedure.
- Take all necessary precautions to prevent hair, jewelry and loose clothes from being caught by the machine moving parts.
- To avoid any unauthorised use of the machine, remove the ignition key.
- Do not leave the machine unattended without being sure that it cannot move independently.
- Do not use the machine on slopes with a gradient exceeding the specifications.
- Use only brooms supplied with the machine and those specified in the User Manual. Using other brooms could reduce safety.
- For machines with electronic battery charger:
 - Before using the battery charger, ensure that frequency and voltage values, shown on the machine serial number plate, match the electrical mains voltage.
 - Do not pull or carry the machine by the battery charger cable and never use the battery charger cable as a handle. Do not close a door on the battery charger cable, or pull the battery charger cable around sharp edges or corners. Do not run the machine on the battery charger cable. Keep the battery charger cable away from heated surfaces.
 - Do not charge the batteries if the battery charger cable or the plug are damaged. If the battery charger cable is damaged, contact Advance Service Center.
 - To reduce the risk of fire, electric shock, or injury, do not leave the machine unattended when it is plugged in. Before performing any maintenance procedure, disconnect the battery charger cable from the electrical mains. Before using the machine, close all doors and/or covers.
- Do not use the machine in particularly dusty areas.
- Use the machine only where a proper lighting is provided.
- If the machine is to be used where there are other people besides the operator, it is necessary to install the pivoting light (optional).
- Do not wash the machine with direct or pressurised water jets, or with corrosive substances. Do not use compressed air to clean this type of machine, except for the filters (see the relevant paragraph).
- While using this machine, take care not to cause damage to people and children especially.
- Do not put any can containing fluids on the machine.
- The machine storage temperature must be 32° F to 104° F (0°C to +40°C).
- The machine working temperature must be 32° F to 104° F (0°C to +40°C).
- The humidity must be between 30% and 95%.
- Always protect the machine against the sun, rain and bad weather, both under operation and inactivity condition. Store the machine indoors, in a dry place. This machine must be used in dry conditions, it must not be used or kept outdoors in wet conditions.
- Do not use the machine as a means of transport, or for pushing/towing.
- Do not allow the brooms to operate while the machine is stationary to avoid damaging the floor.
- In case of fire, use a powder fire extinguisher, not a water one.
- Do not bump into shelves or scaffoldings, particularly where there is a risk of falling objects.
- Adjust the operation speed to suit the floor conditions.
- Avoid sudden stops when the machine is going downhill. Avoid sharp turns. Drive at slow speed when going downhill.
- This machine cannot be used on roads or public streets.
- Do not tamper with the machine safety guards.
- Follow the routine maintenance procedures scrupulously.
- Do not remove or modify the plates affixed to the machine.
- In case of machine malfunctions, ensure that these are not due to lack of maintenance. Otherwise, request assistance from the authorised personnel or from an authorised Service Center.
- In case of part replacement, order ORIGINAL spare parts from an authorised Dealer or Retailer.
- To ensure the proper and safe operation of the machine, have the scheduled maintenance, detailed in the relevant chapter of this Manual, performed by the authorised personnel or an authorised Service Center.
- The machine must be disposed of properly, because of the presence of toxic-harmful materials (batteries, oil, plastics, etc.), which are subject to standards that require disposal in special centers (see Scrapping chapter of the Operator Manual).

GENERAL INFORMATION

TECHNICAL DATA

Dimensions and weights	Values
Machine length	58.3 in (1480 mm)
Machine path (with one side broom)	40.1 in (1020 mm)
Machine path (with two side brooms)	47.2 in (1200 mm)
Machine maximum height (at the steering wheel)	48.0 in (1220 mm)
Cleaning path (without side brooms)	27.6 in (700 mm)
Cleaning path with two side broom	49.6 in (1260 mm)
Minimum ground clearance (skirts not included)	2.2 in (55 mm)
Front – rear wheelbase	30.1 in (765 mm)
Track (centers of rear wheels)	32.8 in (832 mm)
Seat cushion height	36.2 in (920 mm)
Main broom diameter - length	11.8-27.6 in (300-700 mm)
Side broom diameter	16.5 in (420 mm)
Front steering wheel diameter	9.8 in (250 mm)
Rear driving wheel diameter	9.8 in (250 mm)
Front wheel specific pressure on the ground (*)	159.5 psi (1.1 N/mm ²)
Rear wheel specific pressure on the ground (*)	101.5 psi (0.7 N/mm ²)
Machine curb weight (without operator)	842.2 lb (382 Kg)
Waste container capacity	18.5 gal (70 Liters)
Sound pressure level at operator ear (ISO 11201, ISO 4871) (LpA)	63.8 dB(A) ± 3dB(A)
Machine sound pressure level (ISO 3744, ISO 4871) (LwA)	81 dB(A)
Operator's arm vibration (ISO 5349-1) (**)	< 8.2 ft/s ² (< 2.5 m/s ²)
Operator's body vibration level (ISO 2631-1) (**)	< 1.9 ft/s ² (< 0.6 m/s ²)

(*): The machines is tested in the following conditions:

- with operator 165.3 lb (75 Kg) if ride-on
- max size battery
- tank full
- optionals installed
- weight verified on each wheel
- print area verified on concrete for each wheel
- result expressed as max. value for front and max. value for rear wheels.

(**): under normal working conditions and on a level asphalt surface.

GENERAL INFORMATION

TECHNICAL DATA (continues)

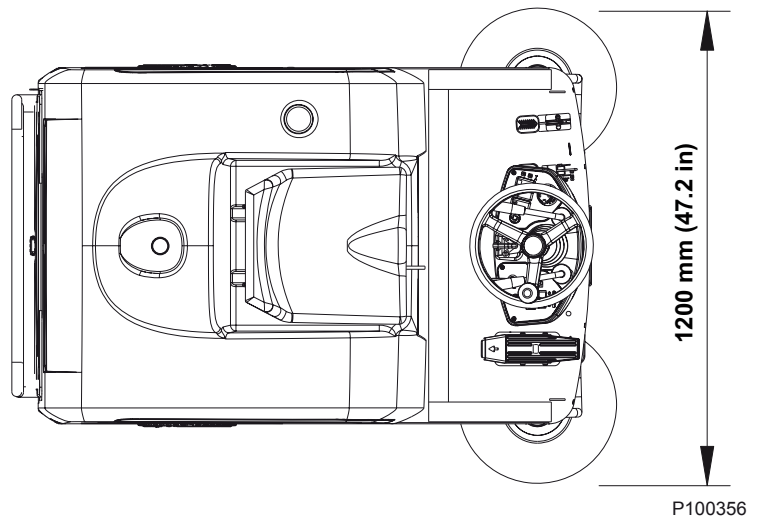
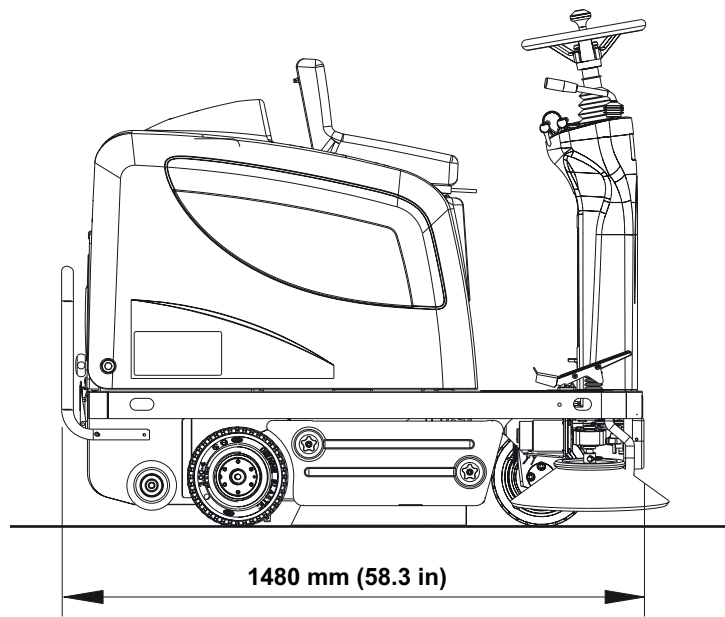
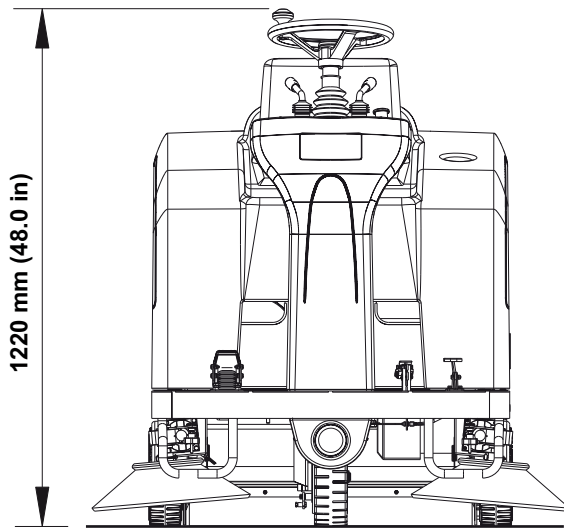
Performance data	Values
Max forward speed	3.7 mph (6 Km/h)
Maximum reverse speed	1.8 mph (3 Km/h)
Gradeability at full load	20%
Main broom rotation speed	550 rpm
Side broom rotation speed	80 rpm
Panel filter area	14.1 ft ² (4,3 m ²)
Panel filter rating	5-10 µm
Main broom compartment vacuum	0,43 in H ₂ O (11 mm H ₂ O)
Minimum turning radius (outer)	51,6 in (1310 mm)

Motor data	Values
Drive motor power	24 V, 0.8 hp (600 W)
Main broom motor power	24 V, 0.67 hp (500 W)
Side broom motor power	24 V, 0.08 hp (60 W)
Vacuum motor power	24 V, 0.41 hp (310 W)
Filter shaker motor power	24 V, 0.12 hp (90 W)

Electrical system data		Values
System voltage		24 V
Propulsion battery	Standard	Lead with acid electrolyte
	Optional	Gel, hermetic
	Battery capacity	256 Ah C5
	Battery compartment maximum size	26.0x17.3x14.6 in (660x440x370 mm)

GENERAL INFORMATION

DIMENSIONS



GENERAL INFORMATION

MAINTENANCE

SCHEDULED MAINTENANCE

The lifespan of the machine and its maximum operating safety are ensured by correct and regular maintenance.



NOTE

See *GENERAL INFORMATION* and *SAFETY - ACCIDENT PREVENTION*

The following table provides the scheduled maintenance. The intervals shown may vary according to particular working conditions, which are to be defined by the person in charge of the maintenance.

The following paragraphs give further instructions about the maintenance interventions listed in the following Scheduled Maintenance Table.

SCHEDULED MAINTENANCE TABLE

Maintenance operation	On delivery	Every 10 hours	Every 50 hours	Every 100 hours	Every 200 hours	Every 400 hours
Battery fluid level check (WET)						
Side and main broom height check and adjustment						
Dust filter cleaning and integrity check						
Skirt height and operation check						
Filter shaker operation check						
Main broom drive belt visual inspection						
Nut and screw tightening check				(1)		
Service and parking brake check and adjustment						
Steering chain check and cleaning						
Main broom drive belt replacement						
Main motor and drive motor carbon brush check and replacement						

(1): And after the first 8 running-in hours.

GENERAL INFORMATION

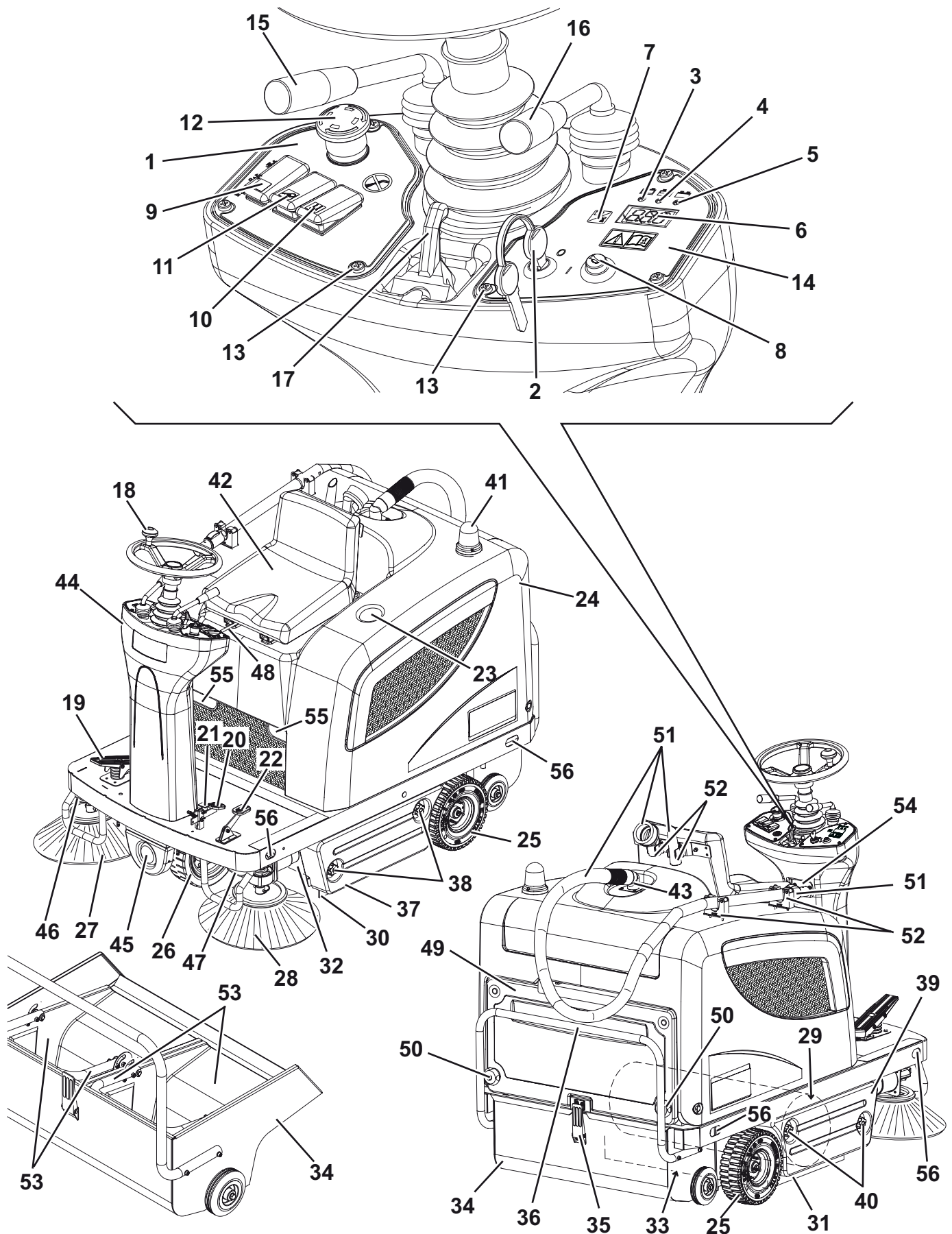
MACHINE NOMENCLATURE

Throughout this manual you will find numbers in brackets – for example: (2). These numbers refer to the components indicated in these two nomenclature pages. Refer to these pages whenever it will be necessary to identify a component mentioned in the text.

- | | |
|--|--|
| 1. Left control panel | 50. Cover knobs |
| 2. Ignition key | 51. Manual vacuum kit (optional) |
| 3. Discharged battery warning light (red) | 52. Manual vacuum kit fasteners |
| 4. Semi-discharged battery warning light (yellow) | 53. Internal containers with handle for dumping (optional) |
| 5. Charged battery warning light (green) | 54. Serial number plate/technical data |
| 6. Display | 55. Hood lifting handles |
| 7. Display selection switch: Hour counter/ hour and minute counter / battery voltage (V) | 56. Machine lifting anchors |
| 8. Horn | 57. Hood (open position) |
| 9. Switch having the following functions: | 58. Open hood support tie rod |
| • Vacuum fan starting/stopping | 59. Batteries |
| • Filter shaker activation | 60. Battery connection diagrams |
| 10. Manual vacuum system switch (optional) | 61. Battery caps (for lead batteries) |
| 11. Head light switch (optional) | 62. Battery connector |
| 12. Emergency switch | 63. Electronic battery charger |
| 13. Control panel fastening screws | 64. Battery charger electrical cable |
| 14. Right control panel | 65. Lead (WET) or gel (GEL) battery selector switch located on the optional electronic battery charger |
| 15. Left/right side broom lifting/lowering lever | 66. Charged battery warning light |
| 16. Main broom lifting/lowering lever | 67. Fuse box |
| 17. Steering wheel position adjusting lever (forward/backward) | 68. Main broom motor circuit breaker (30 A) |
| 18. Steering wheel | 69. Side broom motor circuit breaker (10 A) |
| 19. Forward/reverse gear pedal | 70. Drive board malfunction warning led |
| 20. Service brake pedal (it acts on the front wheel) | 71. Electrical component box |
| 21. Parking brake lever (it acts on the front wheel) | 72. Drive board |
| 22. Front skirt lifting pedal | 73. Battery case |
| 23. Can holder | 74. Manual vacuum system (optional) |
| 24. Hood | 75. Main broom height adjusting knob |
| 25. Rear driving wheels on fixed axle | 76. Air baffle plate |
| 26. Front wheel, steering | |
| 27. Right side broom | |
| 28. Left side broom | |
| 29. Main broom | |
| 30. Left side skirt | |
| 31. Right side skirt | |
| 32. Front skirt | |
| 33. Rear skirt | |
| 34. Waste container | |
| 35. Waste container safety hook | |
| 36. Waste container handle | |
| 37. Removable left door | |
| 38. Door knobs | |
| 39. Main broom right door | |
| 40. Door knobs | |
| 41. Pivoting light (always on when the ignition key is turned to "I" position). (optional) | |
| 42. Driver's seat with safety microswitch | |
| 43. Additional hole for manual vacuum kit (optional) | |
| 44. Steering column | |
| 45. Head light (optional) | |
| 46. Right side broom height adjusting knob | |
| 47. Left side broom height adjusting knob | |
| 48. Seat longitudinal position adjusting lever | |
| 49. Vacuum filter compartment cover | |

GENERAL INFORMATION

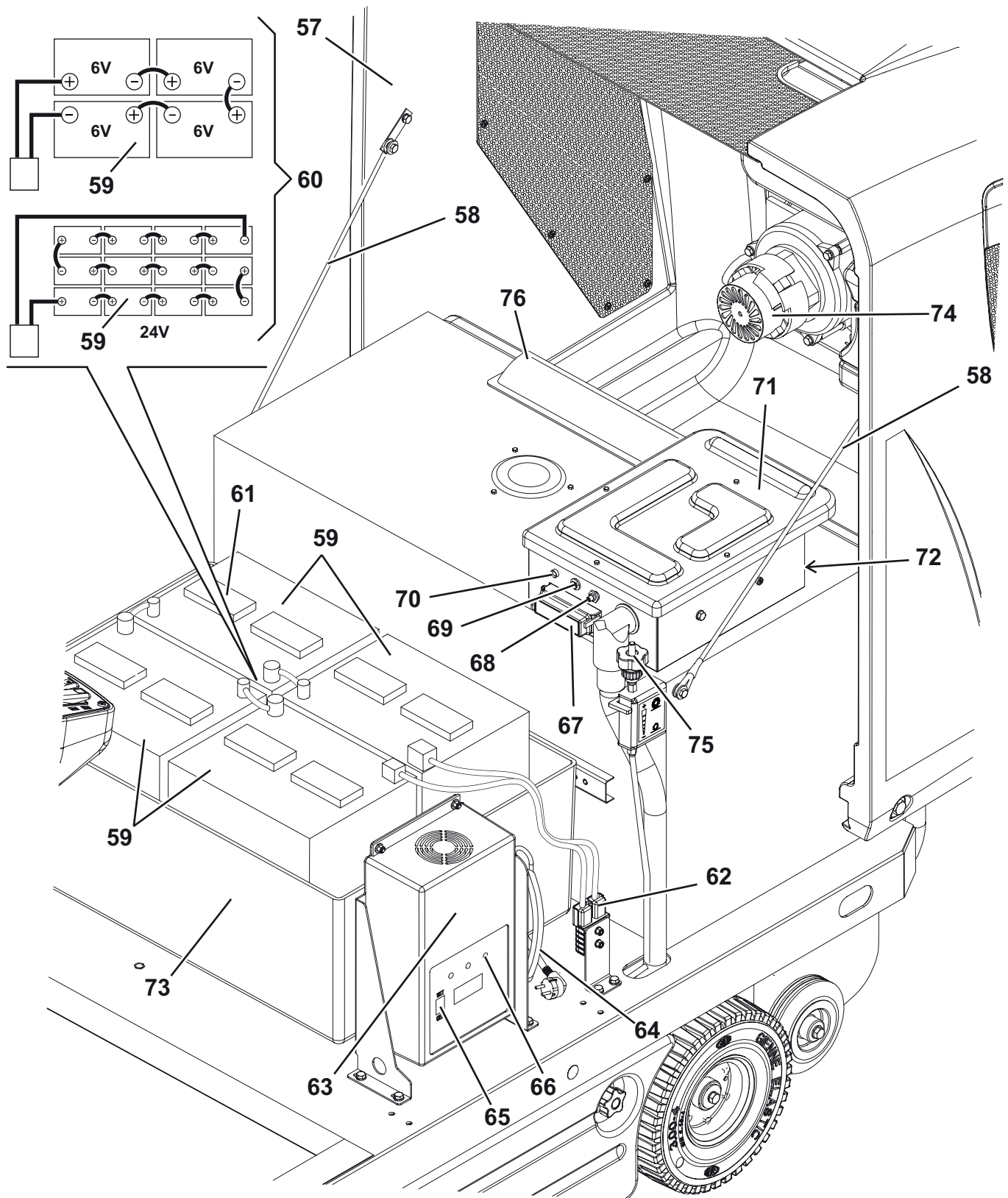
MACHINE NOMENCLATURE



S301231

GENERAL INFORMATION

MACHINE NOMENCLATURE



S301232

SWEEPING SYSTEM

SWEEPING SYSTEM

MAIN BROOM HEIGHT CHECK AND ADJUSTMENT



NOTE

Brooms of various hardness are available. This procedure is applicable to all types of brooms.

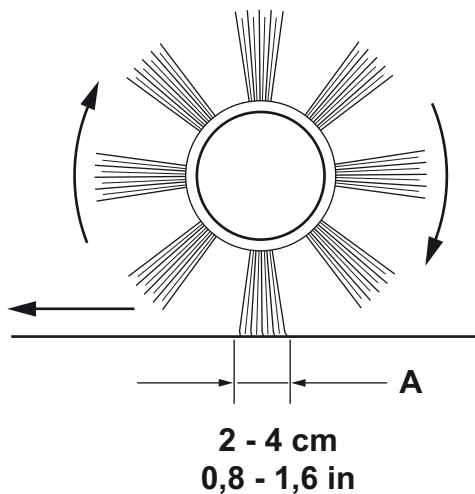
1. Check the main broom for proper ground clearance, proceeding as follows:
 - Drive the machine on a level ground.
 - Keep the machine stationary, lower the main broom and rotate it for few seconds.
 - Stop and lift the main broom, then move the machine and switch it off.
 - Check that the main broom pattern (A), along its length, is from 0.8 to 1.6 in (2 to 4 cm) wide.
 If the pattern (A) is not within specifications, it is necessary to adjust the broom height by proceeding as described in step 2 below, after stopping and braking the machine.
2. Engage the parking brake by pressing the pedal (20 and 21) until it is blocked by the ratchet pawl of the parking brake lever (21).
3. Turn the ignition key (2) to "0" position.
4. Open the hood (24).
5. Loosen the knob (B) on the left side of the machine.
6. Turn the knob (C), and remind that:
 - It must be screwed to lift the broom
 - It must be unscrewed to lower the broom
 After the adjustment, keep the knob (C) stopped and tighten the knob (B).
7. Perform step 1 again to check the proper adjustment of the main broom height from the ground.
8. When the broom is too worn to be adjusted, replace it as shown in the next paragraph.



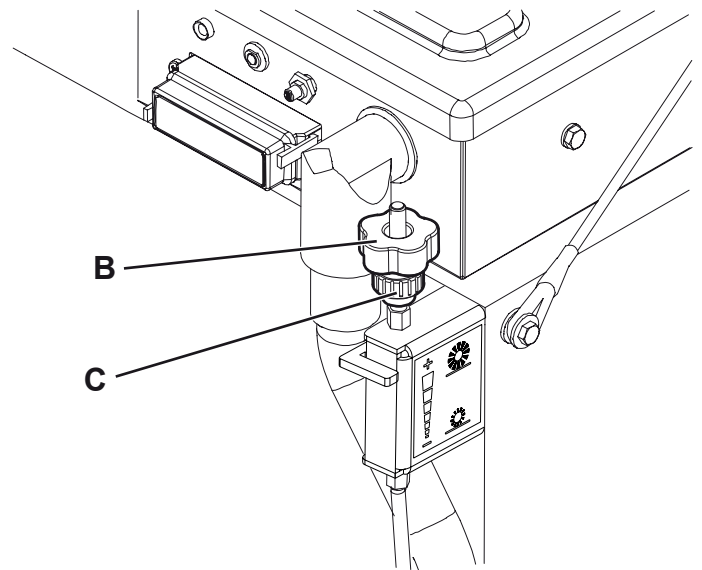
CAUTION!

An excessive pattern [larger than 1.6 in (4 cm)] of the main broom can lead to machine malfunction and moving parts overheating, thus reducing machine life.

Be extremely careful when performing the above-mentioned checks and always use the machine according to the indicated conditions.



S311389



S311390

SWEEPING SYSTEM

MAIN BROOM DISASSEMBLY/REASSEMBLY



NOTE

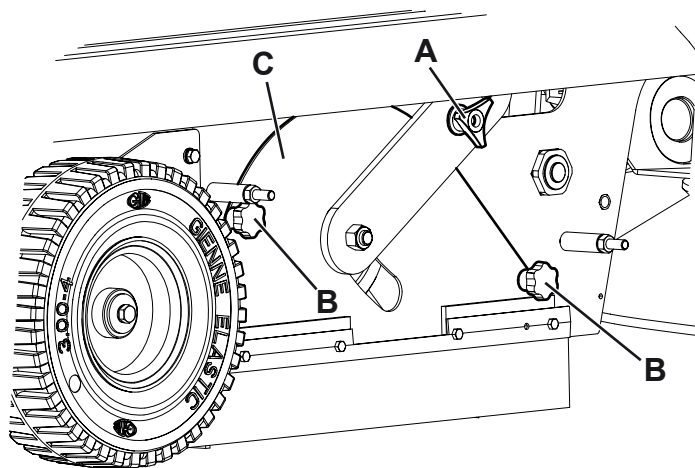
Brooms of various hardness are available. This procedure is applicable to all types of brooms.



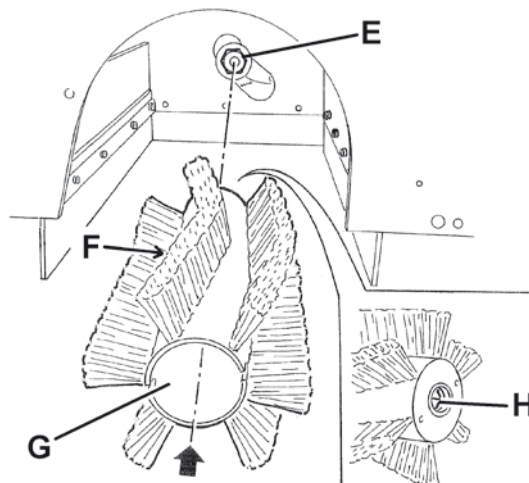
CAUTION!

It is advisable to use protective gloves when replacing the main broom because there can be cutting debris between the bristles.

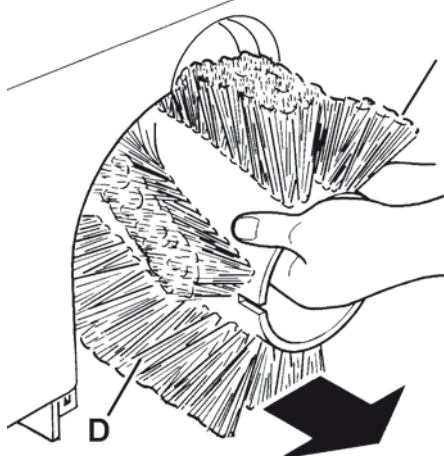
1. Drive the machine on a level ground and engage the parking brake (20 and 21).
2. Turn the ignition key (2) to "0" position.
3. Unscrew the knobs (40) and remove the right door (39).
4. Unscrew the knob (A).
5. Unscrew the knobs (B) and remove the broom compartment cover (C).
6. Remove the broom (D).
7. Check that the drive hub (E) is free from dirt or foreign materials (cords, clothes, etc.) accidentally rolled up.
8. The new broom must be installed with the bristles rows (F) positioned as shown in the figure.
9. Install the new broom (G) on the machine, and ensure that its opening (H) fits into the related drive hub (E).
10. Reinstall the broom compartment cover (C), then screw the knobs (B) and (A).
11. Install the right door (39), then screw the knobs (40).
12. Carry out the main broom height check and adjustment (see the procedure in the relevant paragraph).



S311391



S301238



S301239

SWEEPING SYSTEM

SIDE BROOM HEIGHT CHECK AND ADJUSTMENT



NOTE

Brooms of various hardness are available. This procedure is applicable to all types of brooms.

Check

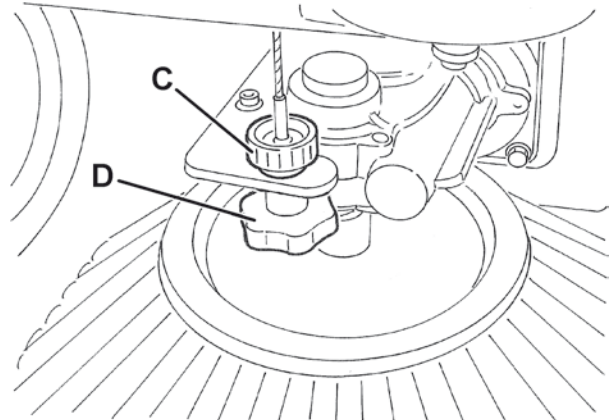
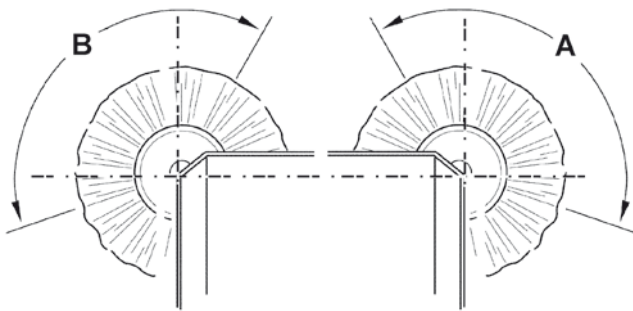
1. Check the side brooms for proper ground clearance, proceeding as follows:
 - Drive the machine on a level ground and lower the side brooms.
 - Keep the machine stationary and rotate the side brooms for a few seconds.
 - Lift the side brooms, then move the machine and switch it off.
 - Check that the size and the orientation of the patterns left by the side brooms match with the areas (A and B).
 If the patterns are not within specifications, it is necessary to adjust the broom height by proceeding as described in step 2 below, after stopping and braking the machine.

Adjustment with the knobs

2. Loosen the knob (C) positioned above the broom.
3. Turn the knob (D), and remind that:
 - It must be screwed to lift the broom
 - It must be unscrewed to lower the broom
 After the adjustment, hold the knob (D) and tighten the knob (C).
4. Perform step 1 again to check the proper adjustment of the side broom height from ground.
5. When the brooms are too worn out to be adjusted, replace them as shown in the next paragraph.

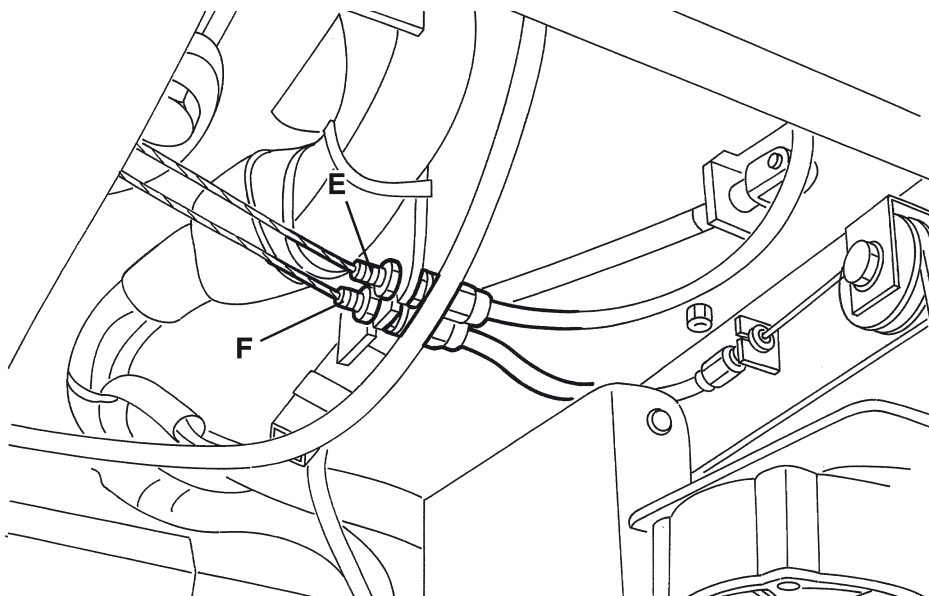
Adjustment with the cable sheath terminals

6. If necessary, adjust the broom height by using the adjustable terminals (E) for the right broom and (F) for the left broom.



S301240

S301241



S301232

SWEEPING SYSTEM

SIDE BROOM DISASSEMBLY/REASSEMBLY

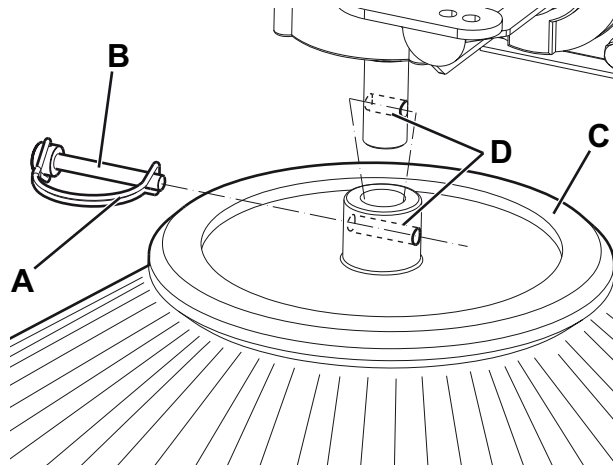
**NOTE**

Brooms of various hardness are available. This procedure is applicable to all types of brooms.

**CAUTION!**

It is advisable to use protective gloves when replacing the side brooms, because there can be cutting debris between the bristles.

1. Drive the machine on a level ground and engage the parking brake (20 and 21).
2. Turn the ignition key (2) to "0" position.
3. Disengage the locking clip (A), taking the pin off (B) and remove the broom (C) from the reduction motor shaft.
4. Place the new broom on the reduction motor shaft, insert the pin (B) in the holes (D), then lock the clip.
5. Carry out the main broom height check and adjustment (see the procedure in the relevant paragraph).



P100350

SWEEPING SYSTEM

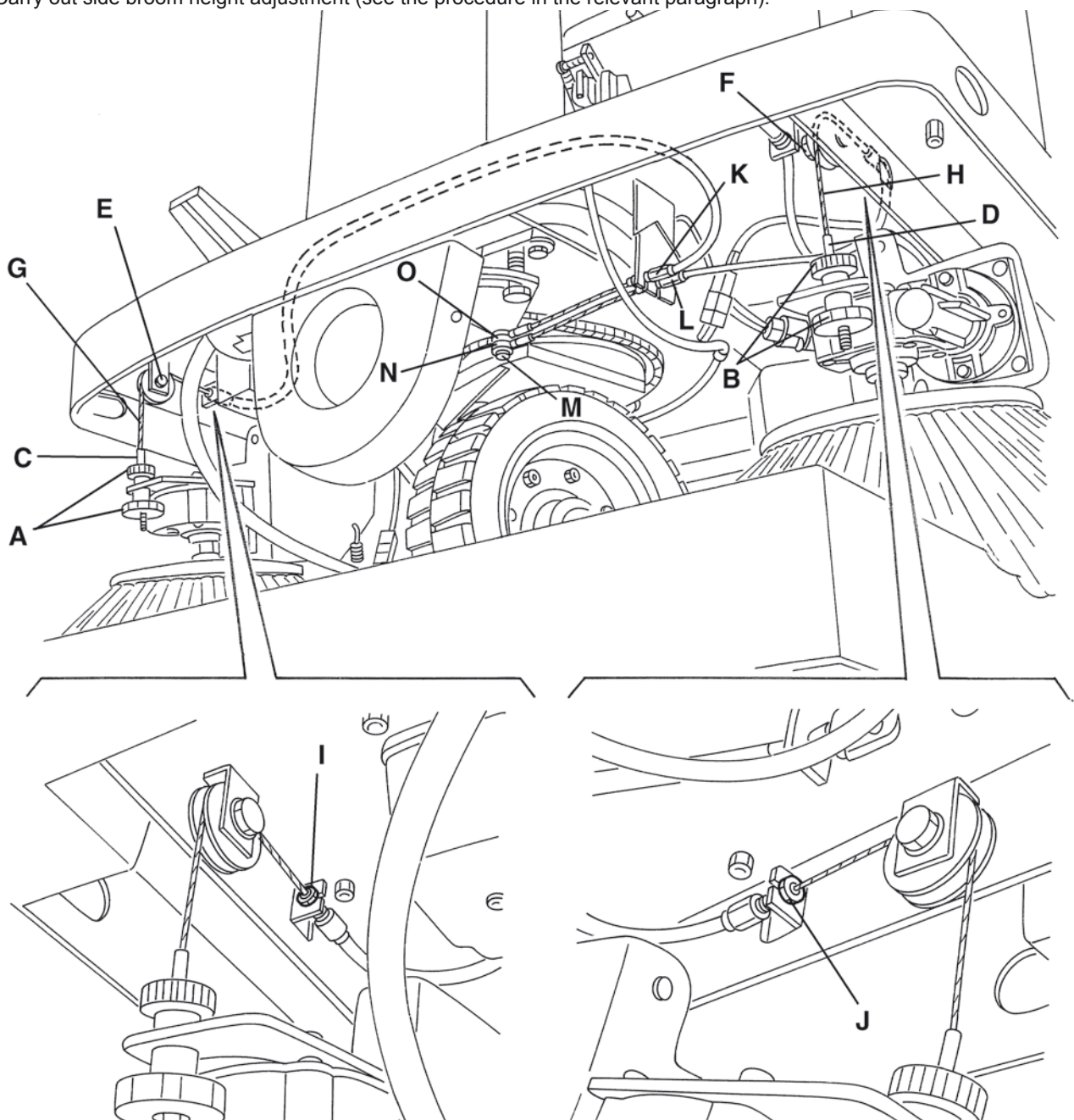
SIDE BROOM LIFTING CABLE DISASSEMBLY/REASSEMBLY

Disassembly

1. Drive the machine onto an appropriate lifting hook.
2. Engage the parking brake (20 and 21).
3. Turn the ignition key (2) to "0" position.
4. Operating according to the safety rules, lift the machine.
If the lifting hook is not available, engage the machine to the four anchors (56), and lift it with a proper hoisting system, operating according to the safety rules.
5. Unscrew the knobs (A) or (B) completely from the tie rods (C) or (D).
6. Loosen the pulley fastening screws (E) or (F) to let the cables (G) or (H) pass through.
7. Unscrew the adjusters (I) or (J).
8. Unscrew the adjusters (K) or (L).
9. Unscrew the nut (M) and disengage the cable terminal (N) or (O).
10. Remove the cable (G) or (H).

Reassembly

11. Reassemble in the reverse order of disassembly.
12. Carry out side broom height adjustment (see the procedure in the relevant paragraph).

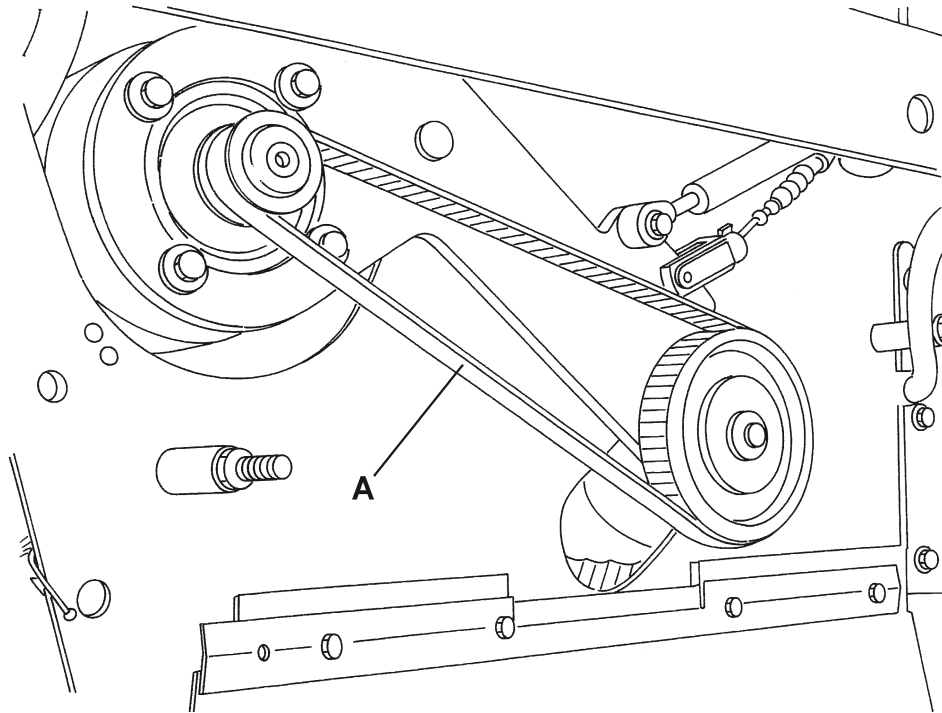


S301244

SWEEPING SYSTEM

MAIN BROOM DRIVING BELT VISUAL INSPECTION

1. Drive the machine on a level ground and engage the parking brake (20 and 21).
2. Turn the ignition key (2) to "0" position.
3. Unscrew the knobs (38) and remove the left door (37).
4. Visually inspect the belt (A) for integrity, cracks or breaks, along its whole length; if necessary, replace it (see the procedure in the relevant paragraph).
5. Tension belt adjustment is not necessary.
6. Install the left door (37), then screw the knobs (38).



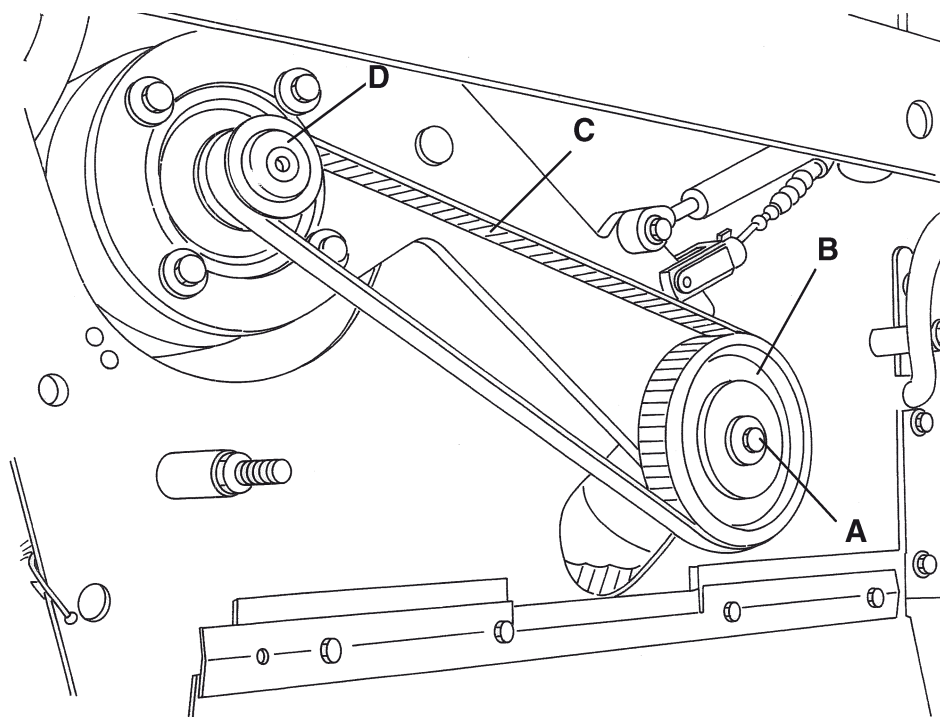
S301245

SWEEPING SYSTEM**MAIN BROOM DRIVING BELT DISASSEMBLY/REASSEMBLY****Disassembly**

1. Drive the machine on a level ground and engage the parking brake (20 and 21).
2. Turn the ignition key (2) to "0" position.
3. Lower the main broom with the lever (16).
4. With a wrench on the screw (A) rotate the pulley (B) clockwise, and disengage the belt (C) from the pulley.
5. Remove the belt (C) from the pinion (D).

Reassembly

6. Install the belt (C) on the pinion (D).
7. With a wrench on the screw (A) rotate the pulley (B) clockwise, and engage the belt (C) to the pulley.
Tension belt adjustment is not necessary.
8. Install the left door (37), then screw the knobs (38).



S301246

SWEEPING SYSTEM

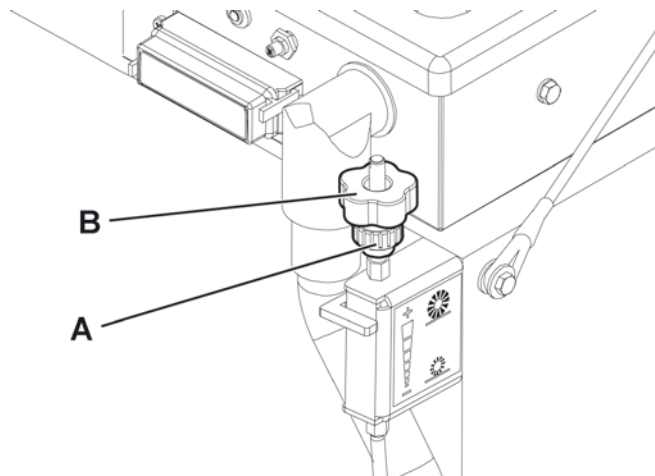
MAIN BROOM GAS SPRING DISASSEMBLY/REASSEMBLY

Disassembly

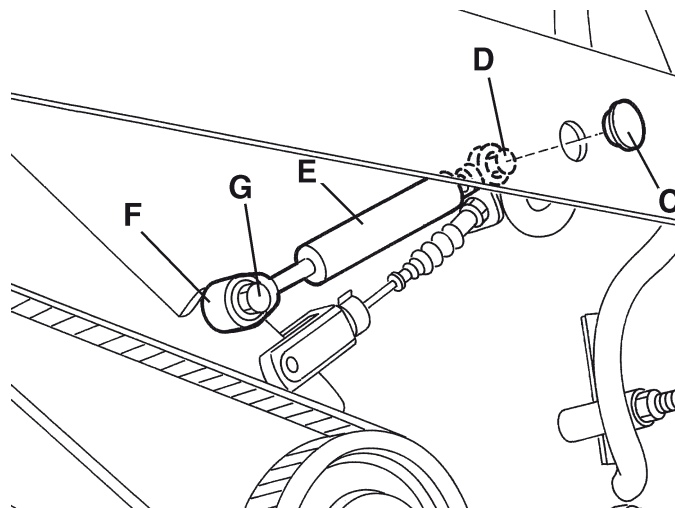
1. Remove the main broom.
2. Unscrew the knobs (38) and remove the left door (37).
3. Lower the main broom with the lever (16).
4. Open the hood (24) with a handle (55).
5. Unscrew the main broom height adjustment knobs (A and B) completely.
6. Remove the rubber cap (C).
7. Unscrew the gas spring (E) fastening screws (D) and (G).
8. Remove the gas spring (E) and recover the spacer (F).

Reassembly

9. Install in the reverse order of removal, and note the following:
 - Tighten first the screw (D), then the screw (G).
10. Carry out main broom height adjustment (see the procedure in the relevant paragraph).



S301247



S301248

SWEEPING SYSTEM

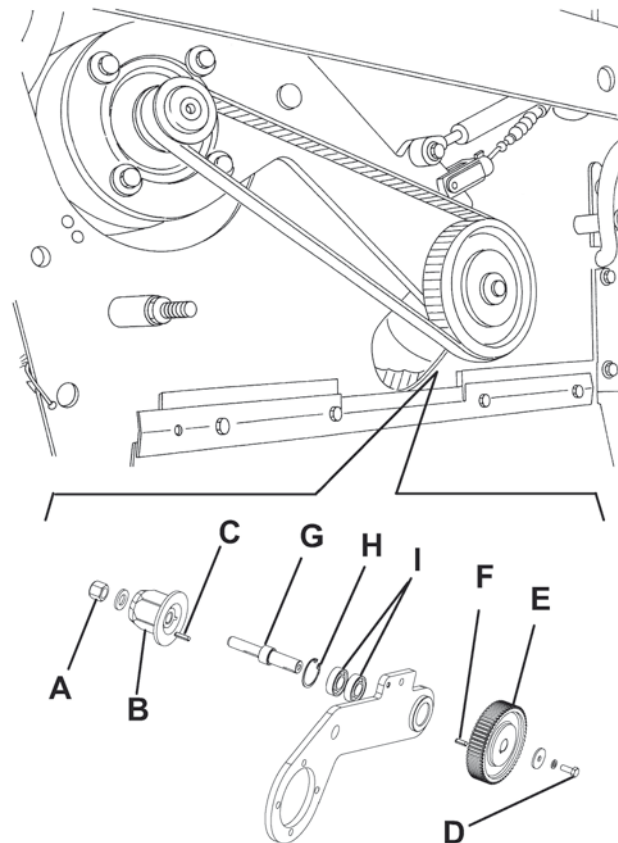
MAIN BROOM PULLEY BEARING REPLACEMENT

Disassembly

1. Drive the machine onto an appropriate lifting hook.
2. Engage the parking brake (20 and 21).
3. Turn the ignition key (2) to "0" position.
4. Operating according to the safety rules, lift the machine.
If the lifting hook is not available, engage the machine to the four anchors (56), and lift it with a proper hoisting system, operating according to the safety rules.
5. Remove the main broom (see the procedure in the relevant paragraph).
6. Unscrew the knobs (38) and remove the left door (37).
7. Unscrew the nut (A).
8. Remove the support (B) and recover the key (C).
9. Remove the screw (D).
10. Remove the pulley (E) and recover the key (F).
11. Remove the main broom joint (G).
12. Remove the retaining ring (H).
13. Remove the main broom pulley bearings (I) with a hammer and a special bearing remover.

Reassembly

14. Install in the reverse order of removal, and note the following:
 - Insert the new bearings (I) by pressing them only on the external ring and using a metal pipe with proper diameter.



S301249

SWEEPING SYSTEM

MAIN BROOM MOTOR ELECTRICAL INPUT CHECK

**WARNING!**

This procedure must be performed by qualified personnel only.

1. Remove the main broom (see the procedure in the relevant paragraph).
2. Lift the hood (24) with a handle (55).

**WARNING!**

Pay attention to the moving parts while performing the following steps.

3. Apply amperometric pliers on the battery positive cable.
4. Start the machine with the ignition key (2).
5. Lower the main broom with the lever (16) and check that the main broom motor electrical input is between the following values:
 - 3.8 to 4.5 A at 24 V.

Lift the main broom with the lever (16).

Turn the ignition key (2) to "0" position and remove the amperometric pliers.

If the electrical input is higher, perform the following operations to detect and eliminate the cause of the abnormal input:

- Check the driving parts from the motor to the main broom.
- If necessary, check the main broom motor carbon brushes (see the procedure in the relevant paragraph).
- If necessary, disassemble the main broom motor (see the procedure in the related paragraph), clean it and check its moving parts.

If the above-mentioned procedures do not lead to a correct electrical input, it is necessary to replace the motor (see the procedure in the relevant paragraph).

3. Carry out steps 1 and 2 in reverse order.

SWEEPING SYSTEM**MAIN BROOM MOTOR CARBON BRUSH CHECK AND REPLACEMENT****Check**

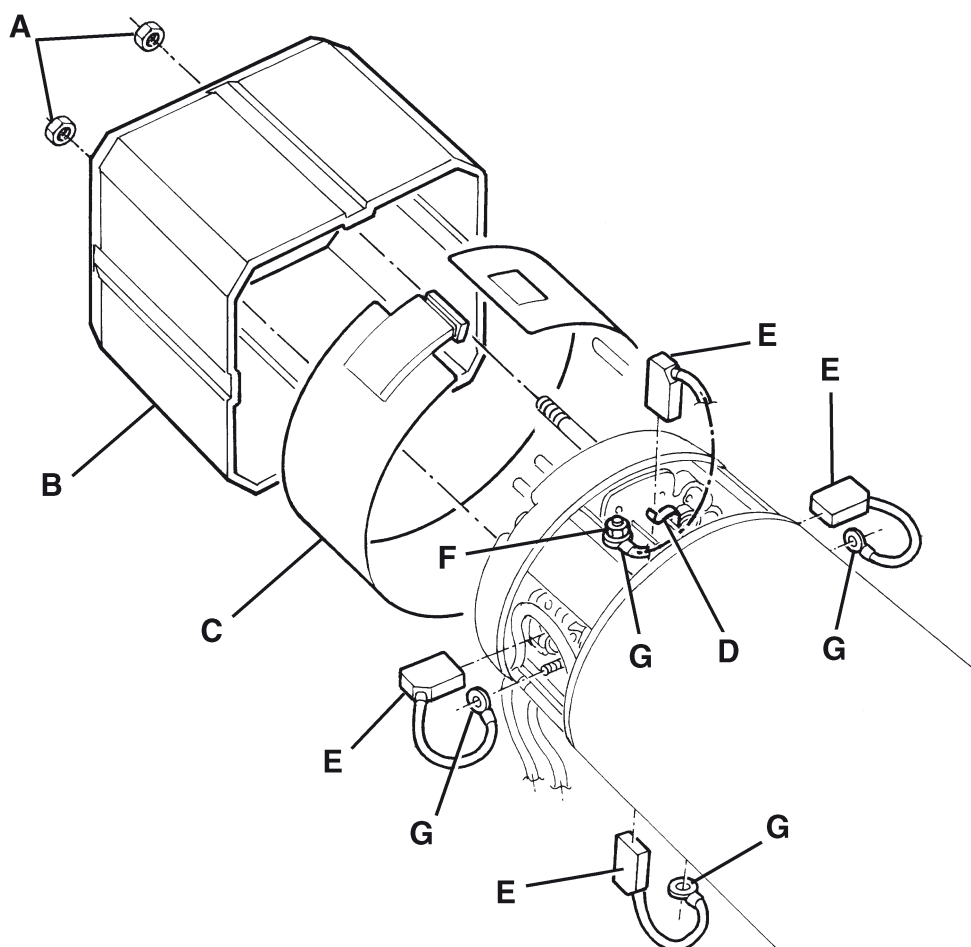
1. Remove the main broom motor (see the procedure in the relevant paragraph).
2. Remove the nuts (A) and the cover (B) at the cabinet bench.
3. Remove dust and dirt from the motor exterior part; then disengage and remove the clamp (C).
4. Lift the retaining spring (D) of each carbon brush, then remove the four carbon brushes (E).
5. Check the four carbon brushes for wear. The carbon brushes are worn when there is not sufficient contact with the motor armature, because of their use, of the contact surface which is not integral or because the thrust spring is broken, etc.

Replacement

6. If necessary, remove the carbon brushes to replace them, by removing the nuts (F) and disengaging the lead-in wires (G).

Reset

7. Reassemble in the reverse order of disassembly.



S301250

SWEEPING SYSTEM

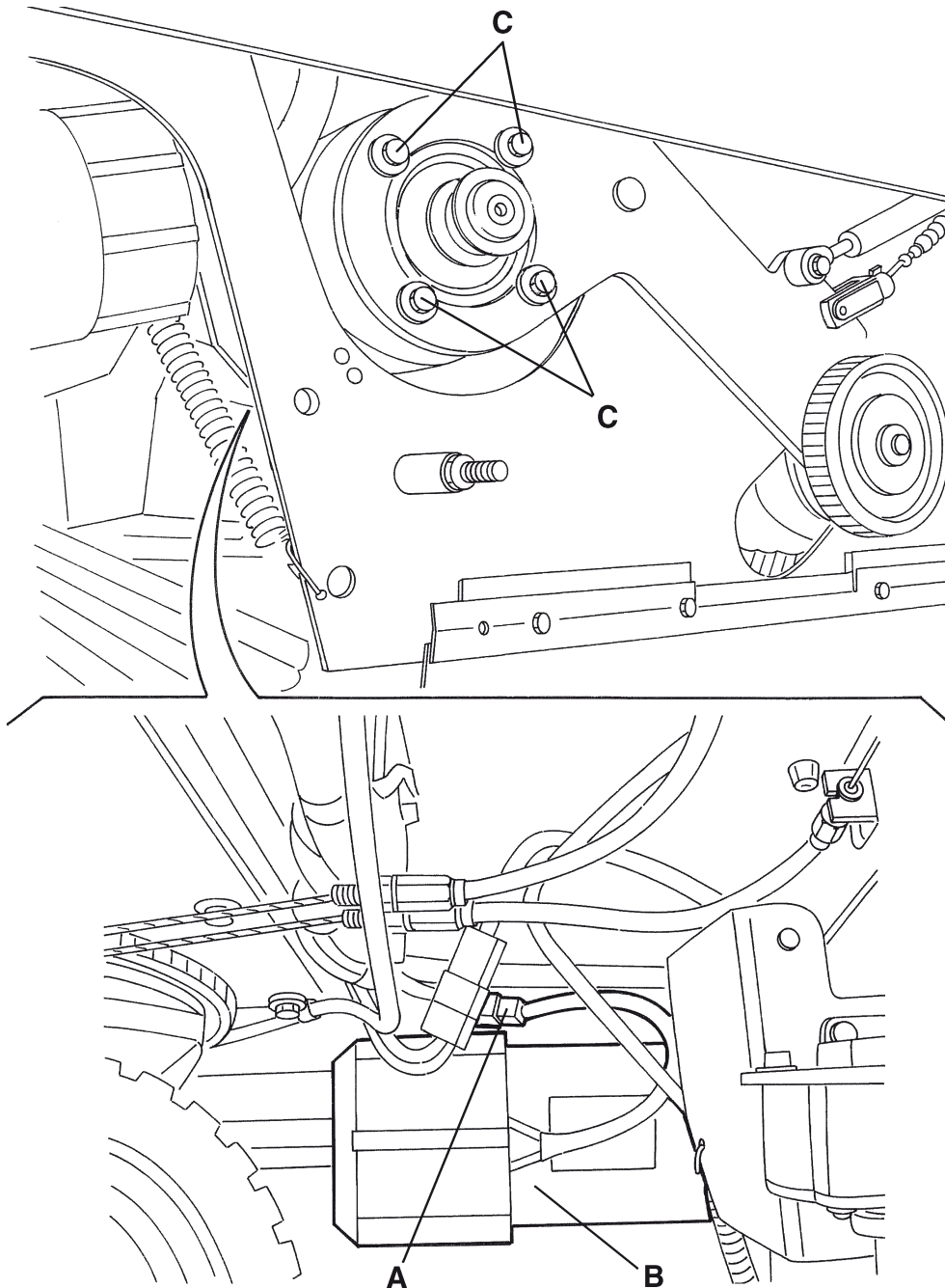
MAIN BROOM MOTOR DISASSEMBLY/REASSEMBLY

Disassembly

1. Remove the main broom driving belt (see the procedure in the relevant paragraph).
2. Disconnect the main broom motor (B) electrical connection (A).
3. Remove the motor fastening screws (C).
4. Remove the main broom motor (B).

Reassembly

5. Reassemble in the reverse order of disassembly.



S301251

SWEEPING SYSTEM

SIDE BROOM MOTOR ELECTRICAL INPUT CHECK



NOTE

This procedure refers to the right broom: The procedure for the left broom is the same.



WARNING!

This procedure must be performed by qualified personnel only.

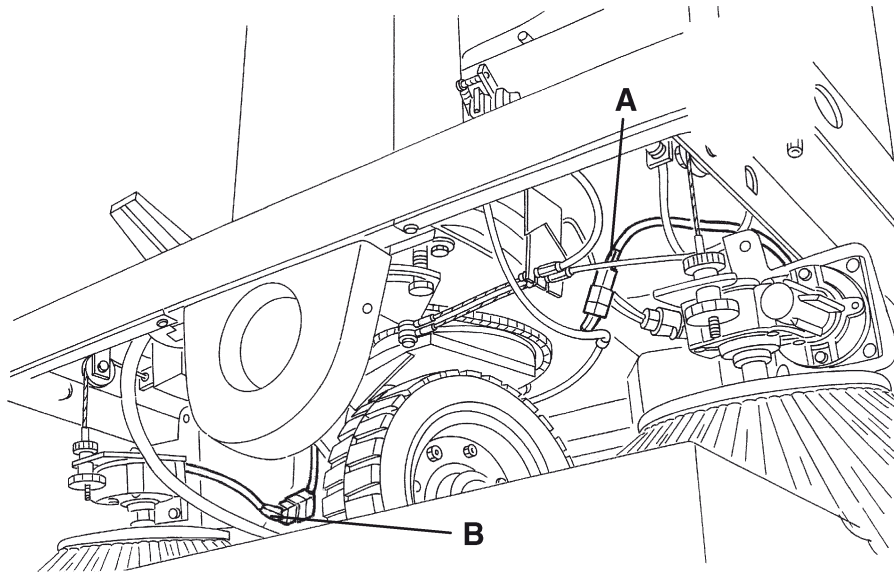
1. Remove the side broom of the motor to be checked (see the procedure in the relevant paragraph).



WARNING!

Pay attention to the brooms and the moving parts while performing the following steps.

2. Apply amperometric pliers on a wire harness cable (A) or (B) of the motor to be checked.
3. Start the machine with the ignition key (2).
4. Lower the main broom with the lever (16).
5. Lower the side broom with the lever (15) and check that the side broom motor electrical input is between the following values:
 - 3.8 to 2.0 A at 24 V.Lift the side broom with the lever (15).
Lift the main broom with the lever (16).
Turn the ignition key (2) to "0" position and remove the amperometric pliers.
If the electrical input is higher, perform the following operations to detect and eliminate the cause of the abnormal input:
 - Check the side broom motor carbon brushes (see the procedure in the relevant paragraph).
 - If necessary, disassemble the side broom motor (see the procedure in the relevant paragraph), clean it and check its moving parts.If the above-mentioned procedures do not lead to a correct electrical input, it is necessary to replace the motor (see the procedure in the relevant paragraph).
6. Reinstall the side broom of the motor to be checked (see the procedure in the relevant paragraph).



S301252

SWEEPING SYSTEM

SIDE BROOM MOTOR CARBON BRUSH CHECK AND REPLACEMENT

Check

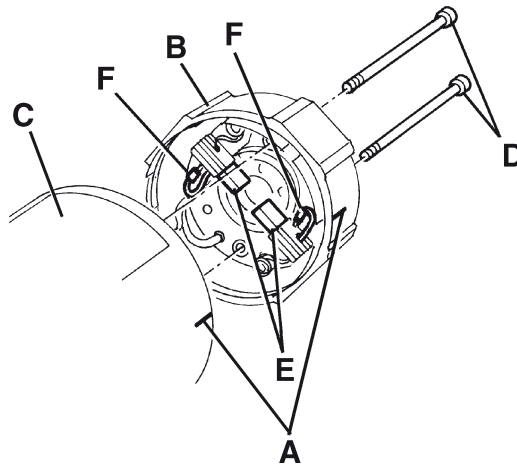
1. Remove the motor of the side broom to be checked (see the procedure in the relevant paragraph).
2. At the cabinet bench, clean the outside of the motor from dirt and dust, then mark the reciprocal position (A) between the cover (B) and the motor body (C).
3. Remove the screws (D), then carefully remove the cover (B).
4. Check if the two carbon brushes (E) are worn. The carbon brushes are worn when there is not sufficient contact with the motor armature, because of their short length, of the contact surface which is not integral or because the thrust spring is broken, etc.

Replacement

5. If necessary, remove the carbon brushes to replace them, by disengaging the lead-in wires (F).
Replace the carbon brushes as an assembly.

Reset

6. Reassemble in the reverse order of disassembly.



S301253

SWEEPING SYSTEM

SIDE BROOM MOTOR DISASSEMBLY/REASSEMBLY



NOTE

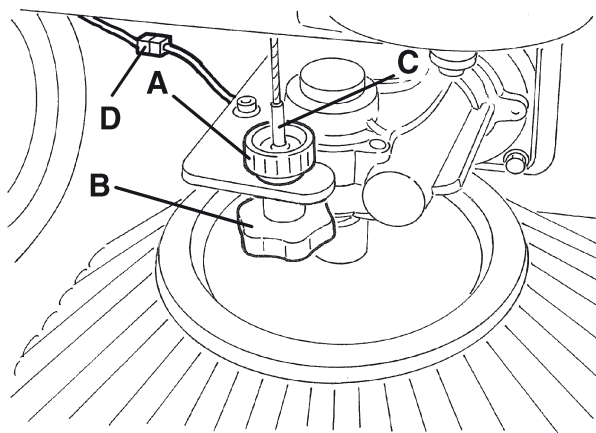
This procedure refers to the right broom: The procedure for the left broom is the same.

Disassembly

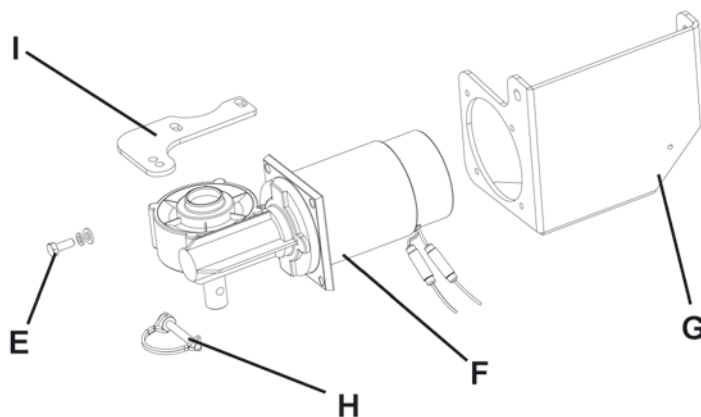
1. Remove the side broom of the motor to be checked (see the procedure in the relevant paragraph).
2. Disconnect the side broom motor electrical connection (D).
3. Unscrew completely the adjusting knobs (A) and (B) from the tie rod (C).
4. Remove the reduction unit (F) fastening screws (E).
5. Remove the reduction unit (F) from the support (G).
6. If necessary, remove the screw (H) and the flange (I); then recover the key (J) and the washers.
7. If necessary, remove the flange (K).

Reassembly

8. 8. Reassemble in the reverse order of disassembly.
9. 9. Carry out side broom height adjustment (see the procedure in the relevant paragraph).



S301254



S301255

SWEEPING SYSTEM

SIDE BROOM ACTIVATION MICROSWITCH ADJUSTMENT AND DISASSEMBLY/REASSEMBLY

Preliminary operations

1. Remove the front cover (see the procedure in the relevant paragraph).

Adjustment

2. Lift the side brooms with the lever (15), then check that the distance between the microswitch actuator (A) and the activation joint (B) is of 0.08-0.12 (2 -3 mm).
If necessary, loosen the nuts (C), move the microswitch (D) as much as it is necessary, and restore the initial position.
After adjusting, tighten the nuts (C).

Disassembly

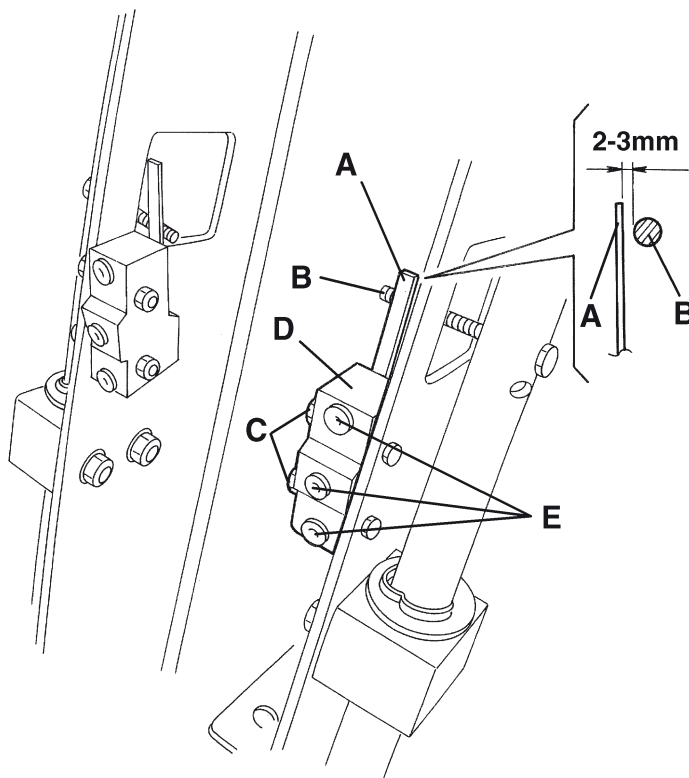
3. Disconnect the microswitch (D) electrical connections (E).
4. Remove the nuts (C) and the screws.
5. Recover the microswitch (D).

Reassembly

6. Reassemble in the reverse order of disassembly.
7. Adjust the microswitch operating as described at step 2.

Reset

8. Reinstall the front cover (see the procedure in the relevant paragraph).



S301256

SWEEPING SYSTEM**MAIN BROOM ACTIVATION MICROSWITCH ADJUSTMENT AND DISASSEMBLY/REASSEMBLY****Preliminary operations**

1. Remove the front cover (see the procedure in the relevant paragraph).

Adjustment

2. Lift the main broom with the lever (16), then check that the distance between the microswitch actuator (A) and the activation joint (B) is of 0.08-0.12 in (2 -3 mm).
If necessary, loosen the nuts (C), move the microswitch (D) as much as it is necessary, and restore the initial position.
After adjusting, tighten the nuts (C).

Disassembly

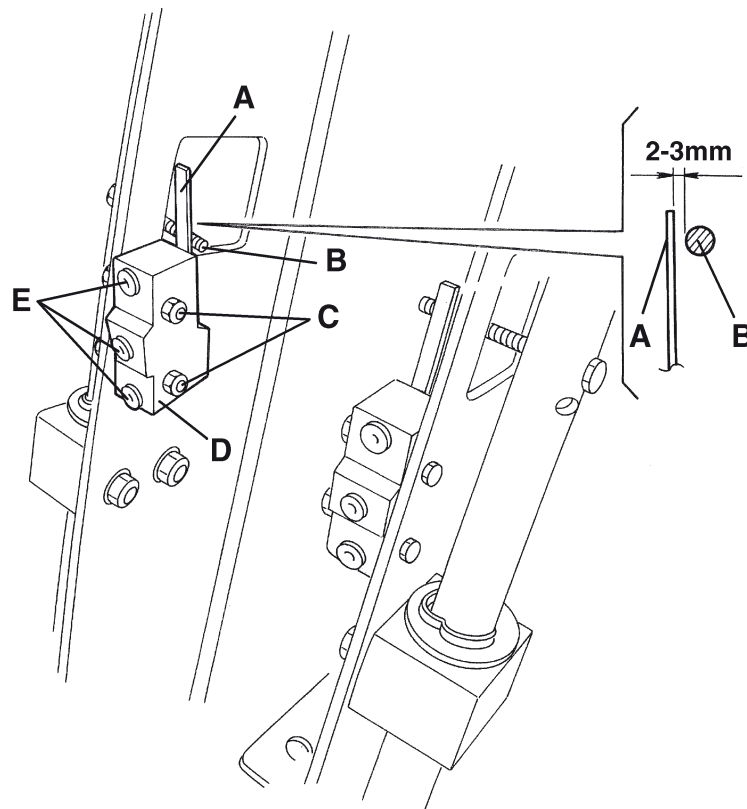
3. Disconnect the microswitch (D) electrical connections (E).
4. Remove the nuts (C) and the screws.
5. Recover the microswitch (D).

Reassembly

6. Reassemble in the reverse order of disassembly.
7. Adjust the microswitch operating as described at step 2.

Reset

8. Reinstall the front cover (see the procedure in the relevant paragraph).



S301257

SWEEPING SYSTEM

TROUBLESHOOTING

OPEN CIRCUIT

The thermal fuses (68) and (69) determine the open circuit. This system allows to prevent the broom circuits and motors from being damaged under overload conditions.

If there is an open in the electrical circuit, the possible causes are the following.

Main broom motor; the thermal fuse (68) activates and opens the electrical circuit. Possible causes:

1. Bulky debris or cords around the broom or between the broom and its flange (remove the broom and the debris or cords).
2. The broom is too much pressed on the floor (check the broom height).
3. The broom motor electrical input is too high (check the electrical input).

Wait at least 2 minutes after the open and, when the problem is solved, push the thermal fuse button (68).

Side broom motors; the thermal fuse (69) activates and opens the electrical circuit. Possible causes:

1. Bulky debris or cords around the broom or between the broom and its flange (remove the broom and the debris or cords).
2. The broom is too much pressed on the floor (check the broom height).
3. The broom motor electrical input is too high (check the electrical input).

Wait at least 2 minutes after the open and, when the problem is solved, push the thermal fuse button (69).

After the activation of the emergency switch (12), in order to restore the machine functions, it is necessary to turn the switch clockwise, as indicated by the arrow on the switch; make sure to perform this operation.

THE MAIN BROOM DOES NOT ROTATE

Possible causes:

1. Too low battery voltage; warning light (3) on (charge the battery).
2. Worn motor carbon brushes (replace).
3. Faulty motor (repair or replace).
4. Driving belt from the motor inefficient or broken (replace the belt).
5. Broom activation microswitch does not operate (adjust or replace).
6. Damaged wire harness (repair).
7. Main broom relay malfunction (replace).
8. Thermal fuse de-energized (restore)

THE SIDE BROOM DOES NOT ROTATE

Possible causes:

1. Too low battery voltage; warning light (3) on (charge the battery).
2. Worn motor carbon brushes (replace).
3. Faulty motor (repair or replace).
4. Broom activation microswitch does not operate (adjust or replace).
5. Damaged wire harness (repair).
6. Side broom relay malfunction (replace).
7. Thermal fuse de-energized (restore)

SKIRT

SKIRT HEIGHT AND OPERATION CHECK AND ADJUSTMENT

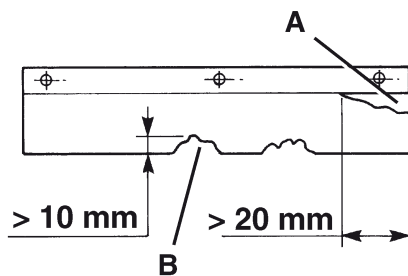
1. Drive the machine on a level and adequate ground to check the skirt height.
Engage the parking brake (20 and 21).
2. Turn the ignition key (2) to "0" position.

Side skirt check

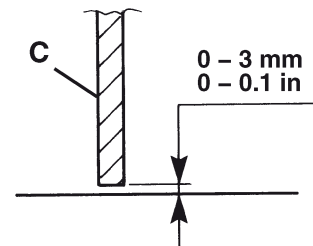
3. Unscrew the knobs (40 and 38) and remove both left and right doors (39 and 37).
4. Check the side skirt (30 and 31) integrity. Replace the skirts when they have cuts (A) larger than 0.8 in (20 mm) or cracks/tears (B) larger than 0.4 (10 mm) (for skirt replacement see the relevant paragraph).
5. Check that the side skirt (C) ground clearance is within 0 - 0.12 in (0 - 3 mm) (as shown in the figure). If necessary, adjust the skirt height by using its slots (D).
6. Reassemble the removed components in the reverse order of disassembly.

Front and rear skirt check

7. Remove the main broom, as described in the relevant paragraph.
8. Check the front (E) and rear (F) skirt integrity. Replace the skirts when they have cuts (A) larger than 0.8 in (20 mm) or cracks/tears (B) larger than 0.4 (10 mm) (for skirt replacement see the relevant paragraph).
9. Check that:
 - The front skirt (G) drags on the ground slightly and that there is no gap between it and the ground (see the figure).
 - The rear skirt (C) height from ground is within 0 - 0.12 in (0 - 3 mm) (see the figure).
10. If necessary, adjust the skirt height using its slots (H and I).
11. Press the front skirt lifting pedal (22) and check that the front skirt (L) rotates upwards of about 1.9 in (5 cm); release the pedal and check that the skirt does not remain in an intermediate position but returns to its initial position.
If necessary, remove the left side broom (see the procedure in the relevant paragraph) and adjust the skirt lifting cable (M) with an adjuster (N) positioned on the skirt left front side. (If necessary refer to the front skirt control cable replacement paragraph).
12. Reassemble the removed components in the reverse order of disassembly.



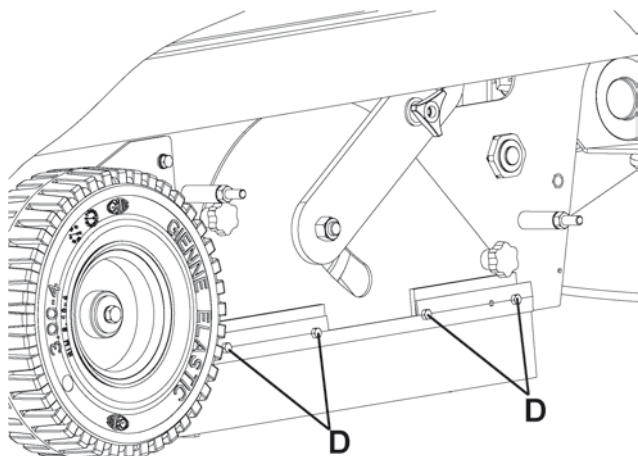
S301258



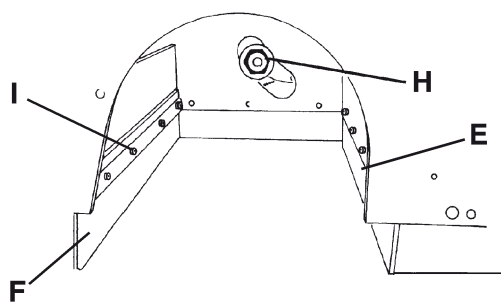
S301259

SKIRT

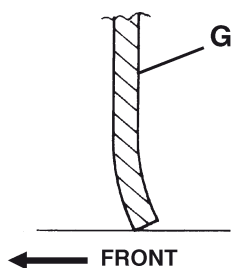
SKIRT HEIGHT AND OPERATION CHECK AND ADJUSTMENT (continues)



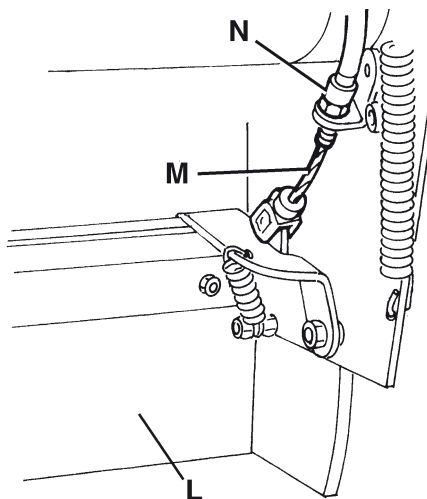
S301260



S301261



S301262



S301263

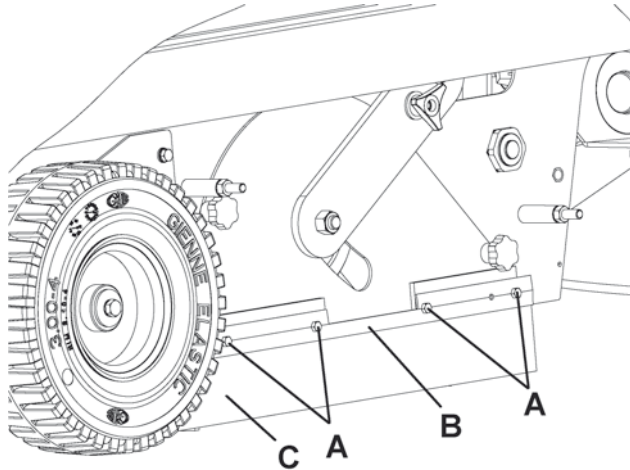
SIDE SKIRT DISASSEMBLY/REASSEMBLY

Disassembly

1. Drive the machine on a level ground that is suitable for checking the skirt height.
2. Engage the parking brake (20 and 21).
3. Turn the ignition key (2) to "0" position.
4. Unscrew the knobs (40 and 38) and remove both left and right doors (39 and 37).
5. Remove the screws (A), the strap (B), the right and left side skirts (C).

Reassembly

6. Assemble the new side skirts (C) with the strap (B) and the screws (A).
7. Adjust the side skirt height (see the procedure in the relevant paragraph).
8. Reinstall the right and left doors (39 and 37) and screw the knobs (40 and 38).



S301264

SKIRT

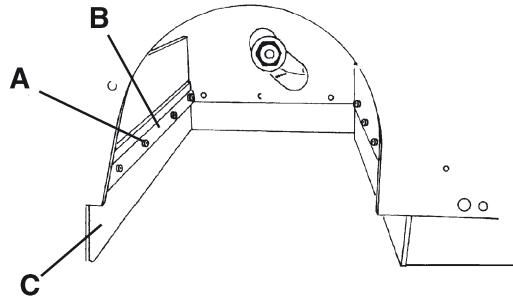
REAR SKIRT DISASSEMBLY/REASSEMBLY

Disassembly

1. Drive the machine on a level ground that is suitable for checking the skirt height.
2. Remove the main broom (see the procedure in the relevant paragraph).
3. Remove the screws (A) the straps (B) and the rear skirt (C).

Reassembly

4. Assemble the rear skirt (C) with the strap (B) and the screws (A).
5. Adjust the rear skirt height (see the procedure in the relevant paragraph).
6. Reassemble the main broom (see the procedure in the relevant paragraph).



S301265

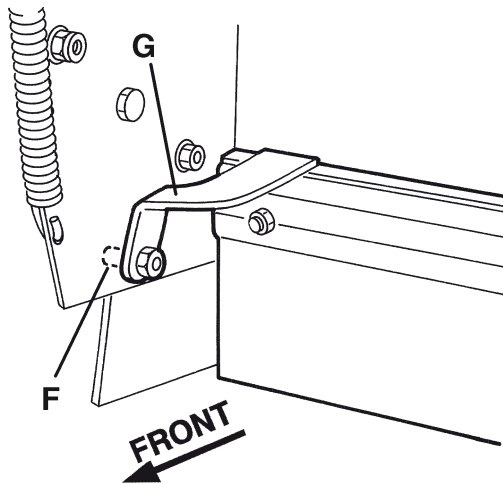
FRONT SKIRT DISASSEMBLY/REASSEMBLY

Disassembly

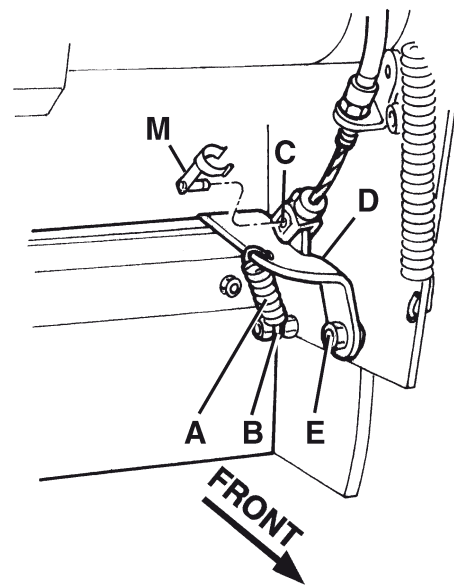
1. Drive the machine on a level ground that is suitable for checking the skirt height.
2. Engage the parking brake (20 and 21).
3. Turn the ignition key (2) to "0" position.
4. Remove the left side broom (28) (if present) (see the procedure in the relevant paragraph).
5. Operating on the left front side of the front skirt, disengage the spring (A) from the side (B).
6. Disconnect the clip (M) and detach the cable end (C) from the support (D).
7. Remove the nut (E).
8. Operating on the right front side of the front skirt, disengage the joint (F) and then remove the skirt from its support (G).
9. At the cabinet bench, remove the screws (H), the strap (I) and the front skirt (L).

Reassembly

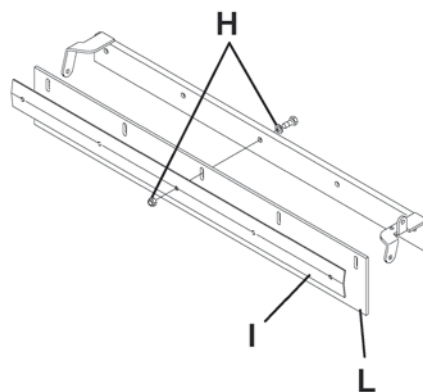
10. Reassemble in the reverse order of disassembly.
11. Adjust the height and check the operation of the front skirt (see the procedure in the relevant paragraph).



S301266



S301267



S301268

SKIRT

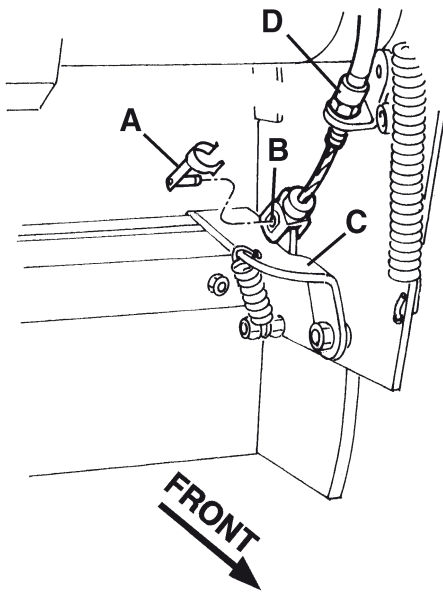
FRONT SKIRT LIFTING CABLE DISASSEMBLY/REASSEMBLY

Disassembly

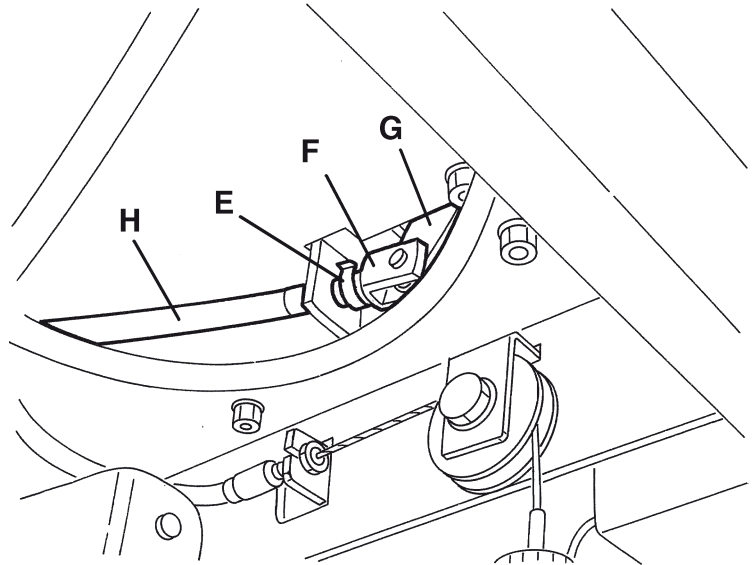
1. Drive the machine on a level ground that is suitable for checking the skirt height.
2. Engage the parking brake by means of the pedal and the lever (20 and 21).
3. Turn the ignition key (2) to "0" position.
4. Remove the left side broom (28) (if present) (see the procedure in the relevant paragraph).
5. Operating on the left front side of the front skirt, disconnect the clip (A) and detach the cable end (B) from the support (C).
6. Loosen the adjuster (D) and remove it from the support.
7. Operating under the front skirt lifting pedal, disconnect the clip (E) and detach the cable end from the pedal lever (G).
8. Remove the front skirt lifting cable (H).

Reassembly

9. Reassemble in the reverse order of disassembly.
10. Adjust the height and check the operation of the front skirt (see the procedure in the relevant paragraph).



S301269



S301270

DUST AND DEBRIS COLLECTION SYSTEM

DUST AND DEBRIS COLLECTION SYSTEM

DUST FILTER CLEANING AND INTEGRITY CHECK



NOTE

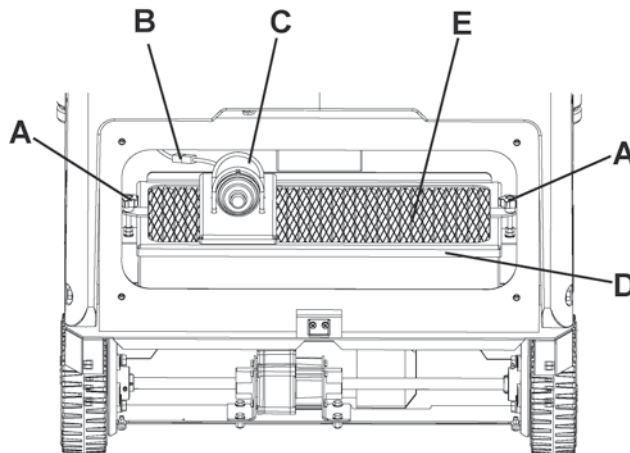
Besides the standard paper filter, optional polyester filters are also available. The following procedure is applicable to each type of filter.

1. Drive the machine on a level ground and engage the parking brake (20 and 21).
2. Turn the ignition key (2) to "0" position.
3. Disengage the hook (35) by pulling its lower end.
4. Remove the waste container (34) by using the handle (36) and disengaging it from the internal guides.
5. Unscrew the knobs (50) and remove the filter compartment cover (49).
6. Unscrew the knobs (A).
7. Disconnect the filter shaker motor (C) electrical connector (B).
8. Remove the dust filter fastening frame (D).
9. Remove the dust filter (E).
10. In an outdoor area, clean the filter by shaking it on a level and clean surface, tapping the side (F) opposite to the wire gauze (G).
Complete the cleaning with compressed air (H) of max. 6 bars, blowing only from the side protected by the wire gauze (G), at a minimum distance of 11.8 in (30 cm).
According to the filter type, observe the following cautions:
 - Paper filter (standard), do not use water or detergents to clean it; the filter can be damaged.
 - Polyester filter (optional): To clean it, see the instructions concerning the paper filter. For a better cleaning, it is allowed to wash the filter with water and non-lathering detergents. This provides better quality cleaning but reduces the life of the filter, which will have to be replaced more frequently. The use of unsuitable detergents can damage the filter.
11. Check the filter body for tears. If necessary, replace it.
12. Clean the rubber seal (I) of the cover (49) and check that it is integral and efficient; if necessary replace it.
13. Reassemble in the reverse order of disassembly.



NOTE

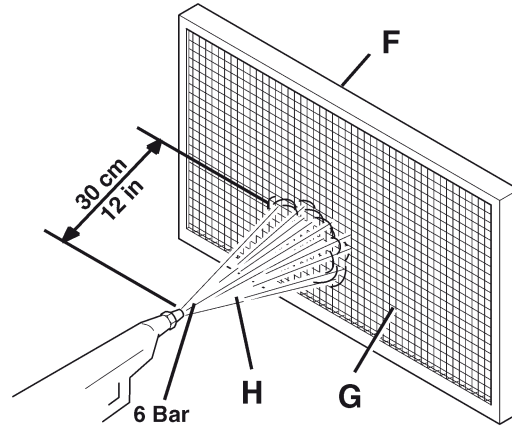
When reinstalling the filter, the wire gauze (G) must be facing upwards.



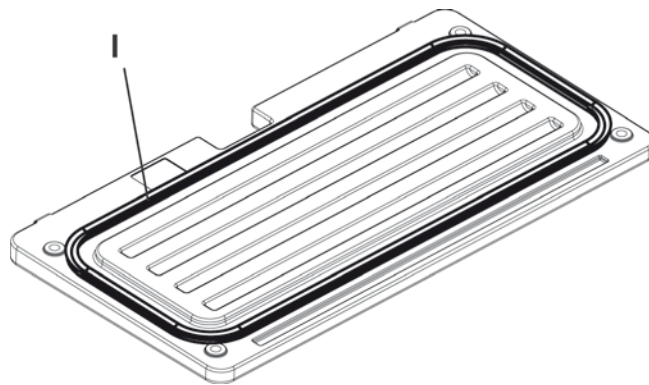
S301271

DUST AND DEBRIS COLLECTION SYSTEM

DUST FILTER CLEANING AND INTEGRITY CHECK (continues)



S301272



S301273

DUST AND DEBRIS COLLECTION SYSTEM

FILTER SHAKER OPERATION CHECK

1. During machine operation, when the panel filter is supposed to be clogged, press the switch (9) onwards for a few seconds to activate the filter shaker motor and check that the related noise is audible. Restart machine operation and check if the filter has been shaken. If the filter has been shaken correctly, the machine vacuum capability is greatly improved.
2. If necessary, check the filter shaker motor or replace it (see the procedure in the relevant paragraph).

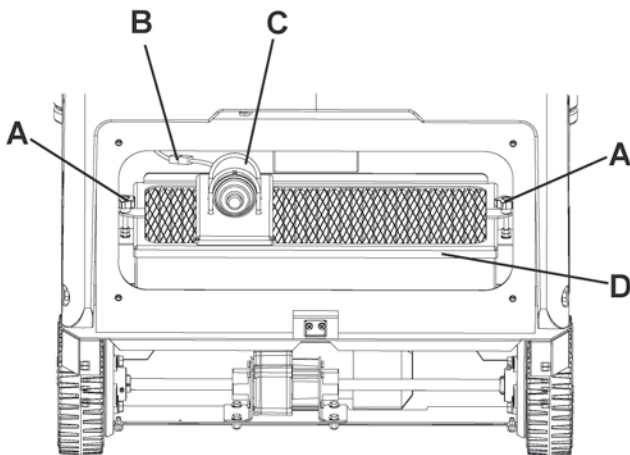
FILTER SHAKER MOTOR DISASSEMBLY/REASSEMBLY

Disassembly

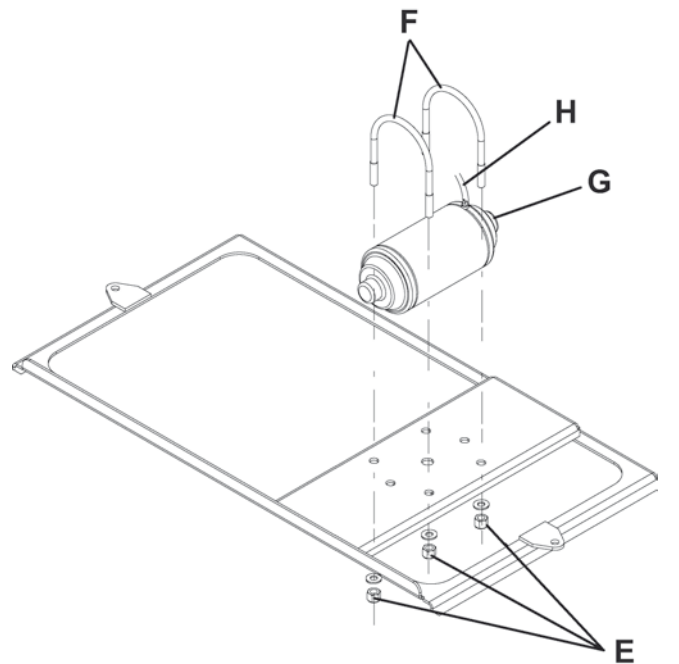
1. Drive the machine on a level ground and engage the parking brake (20 and 21).
2. Turn the ignition key (2) to "0" position.
3. Disengage the hook (35) by pulling its lower end.
4. Remove the waste container (34) by using the handle (36) and disengaging it from the internal guides.
5. Unscrew the knobs (50) and remove the filter compartment cover (49).
6. Unscrew the knobs (A).
7. Disconnect the filter shaker motor (C) electrical connector (B).
8. Remove the dust filter fastening frame (D).
9. At the cabinet bench, remove the nuts (E) and the two clamps (F).
10. Remove the filter shaker motor (G).

Reassembly

11. Install in the reverse order of removal, and note the following:
 - Install the filter shaker (G) with the electrical cable (H) facing upwards.



S301274



S301275

DUST AND DEBRIS COLLECTION SYSTEM

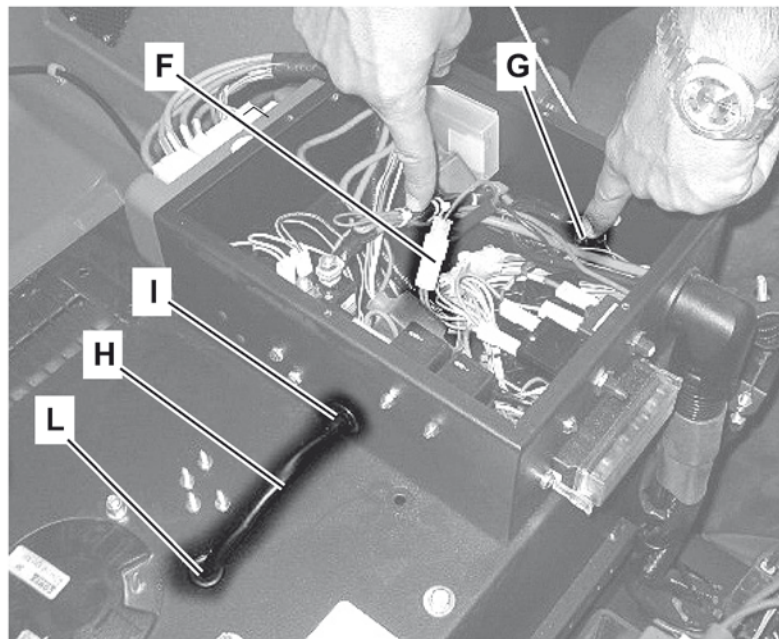
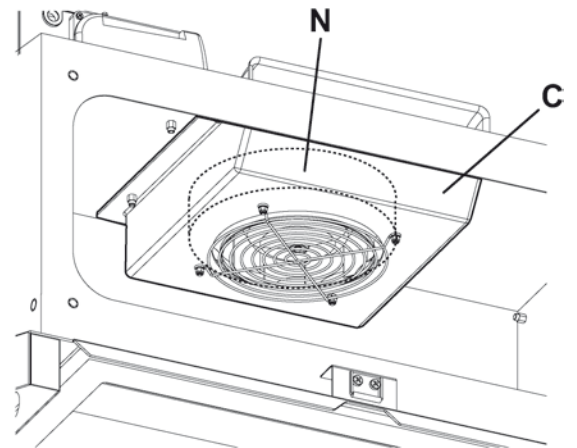
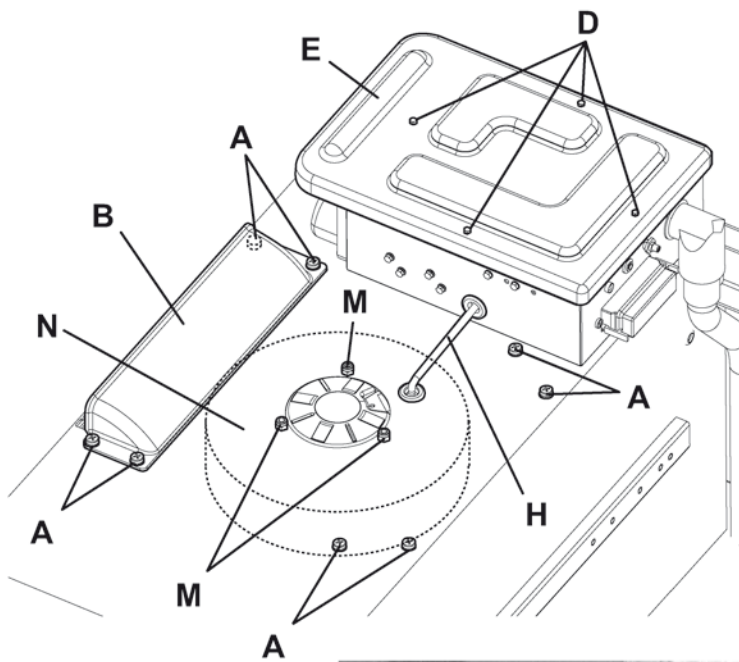
VACUUM FAN DISASSEMBLY/REASSEMBLY

Disassembly

1. Drive the machine on a level ground and engage the parking brake (20 and 21).
2. Turn the ignition key (2) to "0" position.
3. Unplug the battery connector (62)
4. Disengage the hook (35) by pulling its lower end.
5. Remove the waste container (34) by using the handle (36) and disengaging it from the internal guides.
6. Unscrew the knobs (50) and remove the filter compartment cover (49).
7. Open the hood (24) with a handle (55).
8. Unscrew the screws (A), remove the air deflector (B) and the lower grate, working in the filter space.
9. Unscrew the screws (D), open the electronic box cover (E), unplug the connector (F) and unscrew the nut for drawing out the grommet from the screw stud
10. Pull out the fan wire (H) from the holes(I) and (L)
11. Unscrew the nuts (M) and by working in the filter space, remove the fan (N)

Reassembly

11. Reassemble in the reverse order of disassembly.

DUST AND DEBRIS COLLECTION SYSTEM**VACUUM FAN DISASSEMBLY/REASSEMBLY (continues)**

S301276

DUST AND DEBRIS COLLECTION SYSTEM

TROUBLESHOOTING

POOR OPERATION OF THE VACUUM FAN

Possible causes:

1. The dust filter is obstructed (clean).
2. Vacuum fan with broken/worn fins (replace the vacuum fan).
3. Worn waste container gaskets (replace).

THE FILTER SHAKER MOTOR DOES NOT OPERATE

Possible causes:

1. Faulty motor (repair or replace).
2. Broken filter shaker button (9) (replace).
3. Damaged wire harness (repair).
4. Filter shaker motor relay malfunction (replace).
5. Blown fuse (replace).
6. Filter shaker motor connector disconnected (connect).

STEERING AND BRAKING SYSTEM**STEERING AND BRAKING SYSTEM****STEERING CHAIN CHECK AND CLEANING****NOTE**

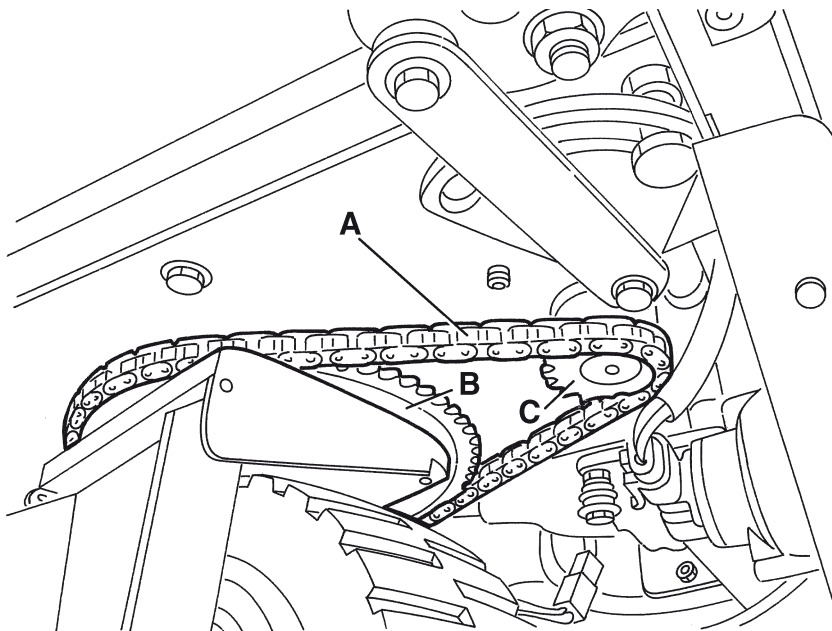
The steering chain is not adjustable.

1. Drive the machine on a level ground and engage the parking brake (20 and 21).
2. Turn the ignition key (2) to "0" position.
3. Remove the left side broom, if present (see the procedure in the relevant paragraph).
4. Check that the steering chain (A) and the related ring gears (B) and (C) are free from dirt or foreign materials (cords, clothes, etc.) and excessive dirt. If necessary, wipe the debris off the chain with a brush and a solvent, making the whole chain (A) slide in the accessible area, by moving the steering wheel.
Wipe off the solvent from the machine parts.

**WARNING!**

Do not lubricate the chain after the cleaning.

5. If the left side broom has been removed, reinstall it (see the procedure in the relevant paragraph).



S301278

STEERING AND BRAKING SYSTEM

STEERING CHAIN DISASSEMBLY/REASSEMBLY


NOTE

The steering chain is not adjustable.

Disassembly

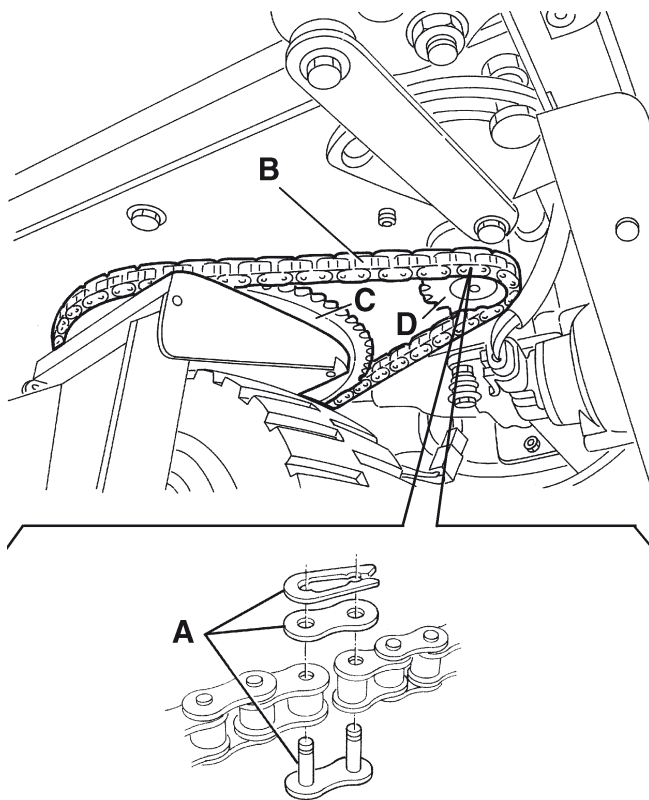
1. Drive the machine on a level ground and engage the parking brake (20 and 21).
2. Turn the ignition key (2) to "0" position.
3. By turning the steering wheel, take the steering chain (B) junction link (A) at an accessible position.
4. Open the junction link (A) and remove the chain (B) from the two ring gears (C) and (D).
5. If necessary, wipe off debris and dust from the ring gears (C) and (D) using a brush and a solvent. Wipe off the solvent from the machine parts.

Reassembly

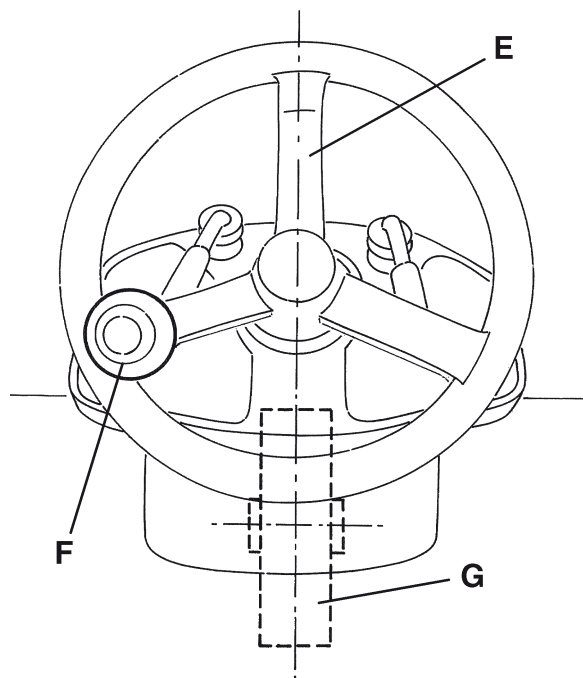
6. Install in the reverse order of removal, and note the following:
 - Reinstall the chain (B) aligning the front wheel (G) and the steering wheel spoke (E) with the machine longitudinal axle. The spoke with the knob (F) must be on the left side.


WARNING!

Do not lubricate the chain after the installation.



S301279

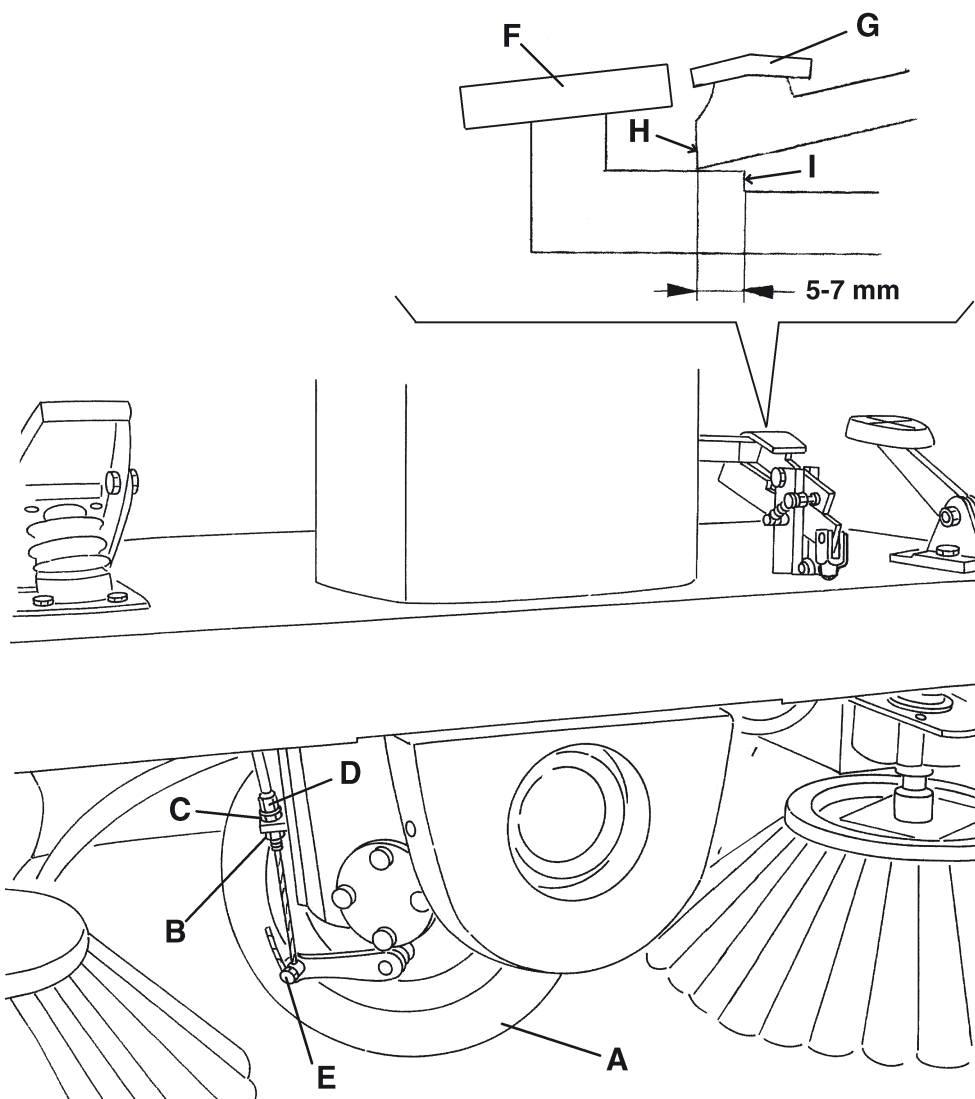


S301280

STEERING AND BRAKING SYSTEM

SERVICE AND PARKING BRAKE CHECK AND ADJUSTMENT

1. Drive the machine on a level ground.
2. Do not engage the parking brake (20 and 21), but check that the machine cannot move independently.
3. Turn the ignition key (2) to "0" position.
4. Turn the front wheel (A) to the left.
5. Loosen the nuts (B) and (C) and adjust the sheath terminal (D) (if necessary operate on the cap (E)) to obtain the following condition:
 - By pressing the service brake until the braking elements lightly come in contact with the drum, the parking brake lever (G) front end (H) must be at a distance of 0.19 - 0.27 in (5 - 7 mm) from the hooking tooth (I), as shown in the figure.
6. After adjusting, tighten the nuts (B) and (C).
7. Carry out hand-on brake tests and check the correct operation of the service and parking brake.



S301281

STEERING AND BRAKING SYSTEM

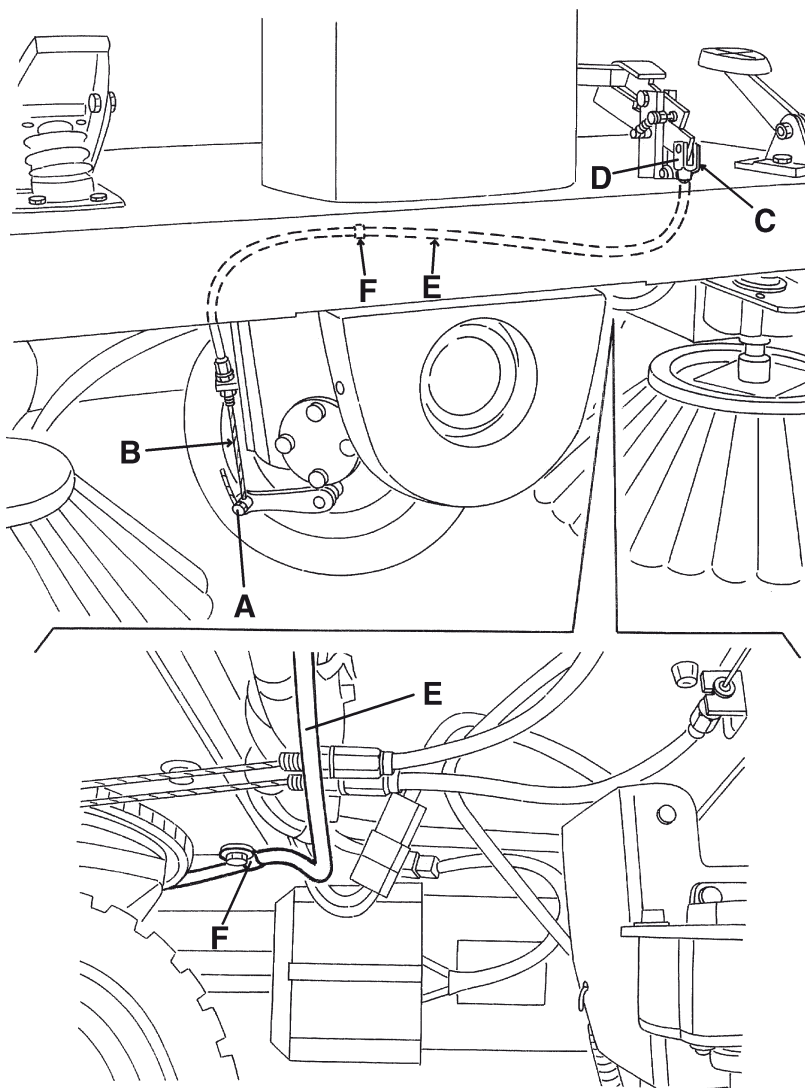
BRAKE CONTROL CABLE REPLACEMENT

Disassembly

1. Drive the machine on a level ground.
2. Do not engage the parking brake (20 and 21), but check that the machine cannot move independently.
3. Turn the ignition key (2) to "0" position.
4. Remove the cap (A) from the brake control cable (B).
5. Remove the clip (C) and disconnect the brake control cable terminal (D) from the lever.
6. Remove the cable (B) from the terminal side (D).
7. If necessary, remove the cable sheath (E) after disengaging it from the retainer (F).

Reassembly

8. Install in the reverse order of removal, and note the following:
 - Before inserting the new cable (B) into the sheath, apply a thin coat of grease along the cable (so that it smoothly slides into the sheath).
9. Adjust the brakes as specified in the relevant paragraph.



S301282

STEERING AND BRAKING SYSTEM

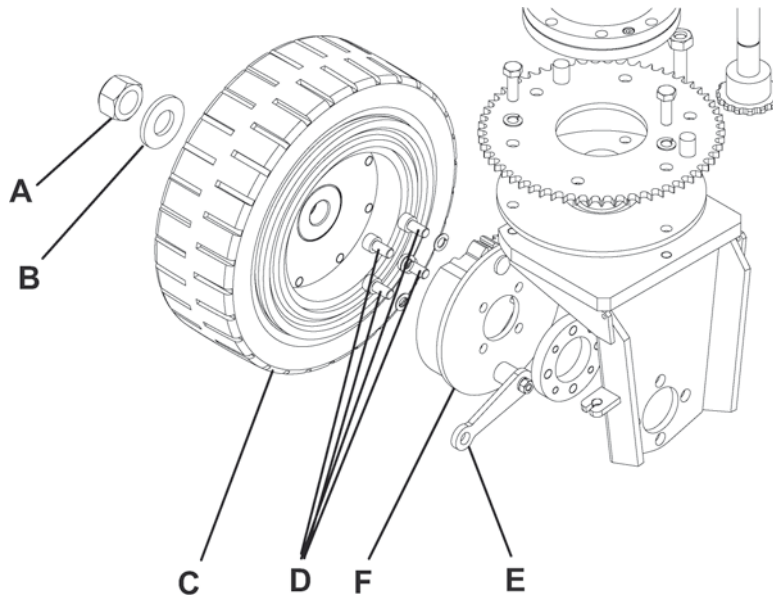
BRAKE SYSTEM DISASSEMBLY/REASSEMBLY

Disassembly

1. Drive the machine on a level ground.
2. Do not engage the parking brake (20 and 21), but check that the machine cannot move independently, by applying wedges to the rear wheels.
3. Turn the ignition key (2) to "0" position.
4. Remove the side brooms (see the procedure in the relevant paragraph).
5. With a proper and safe hoisting system, hook the machine on the two front lifting anchors (56), then lift it until the front wheel (26) is at some centimeters from the ground.
6. Apply two proper safety stands under the lifted front frame to prevent it from lowering accidentally.
7. Unscrew the nut (A) and recover the washer (B).
8. Remove the front wheel (C).
9. Remove the screws (D).
10. Disconnect the brake lever (E) from the control cable.
11. Remove the brake system (F).

Reassembly

12. Reassemble in the reverse order of disassembly.
13. Adjust the service and parking brake (see the procedure in the relevant paragraph).



S301283

DRIVE SYSTEM

DRIVE SYSTEM

DRIVE MOTOR ELECTRICAL INPUT CHECK


WARNING!

This procedure must be performed by qualified personnel only.

1. Drive the machine on a level ground.
2. Engage the parking brake (20 and 21).
3. Turn the ignition key (2) to "0" position.
4. With a proper and safe hoisting system, hook the machine on the two front lifting anchors (56), then lift it until the rear wheels (25) are at 1.6-1.9 in (4-5 cm) from the ground.
5. Lift the hood (24) with a handle (55).
6. Disconnect the electrical connection (A) of the drive system disengaging safety microswitch without the operator seated on the driver's seat. Then insert a jumper on the machine side connector to temporarily activate the safety microswitch.


WARNING!

Pay attention to the rear wheel rotation while performing the following steps.

8. Apply amperometric pliers on the battery positive cable.
9. Start the machine with the ignition key (2).
10. Press the forward gear pedal (19) to the end of the stroke, and check that the drive motor electrical input is between the following values:

- 2.8 to 3.2 A at 24 V.

Release the pedal (19). Turn the ignition key (2) to "0" position and remove the amperometric pliers.

If the electrical input is higher, perform the following operations to detect and eliminate the cause of the abnormal input:

- Check the motor carbon brushes (see the procedure in the relevant paragraph).
- If necessary, disassemble the drive motor (see the procedure in the relevant paragraph), clean it and check its moving parts.

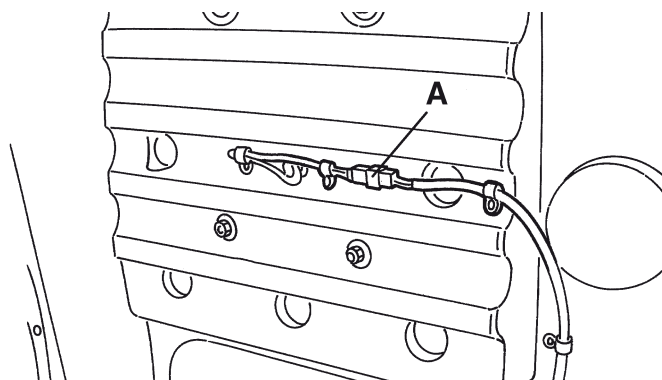
If the above-mentioned procedures do not lead to a correct electrical input, it is necessary to replace the motor (see the procedure in the relevant paragraph).

11. Remove the jumper from the machine side connector, then reconnect the electrical connection (A) of the drive system disengaging safety microswitch without the operator seated on the driver's seat.


WARNING!

If the jumper is not removed and the electrical connection (A) is not reconnected, the drive system disengaging safety microswitch without the operator seated on the driver's seat is not reactivated.

12. Carry out steps 4 and 5 in reverse order.



S301284

DRIVE MOTOR CARBON BRUSH CHECK AND REPLACEMENT**Check**

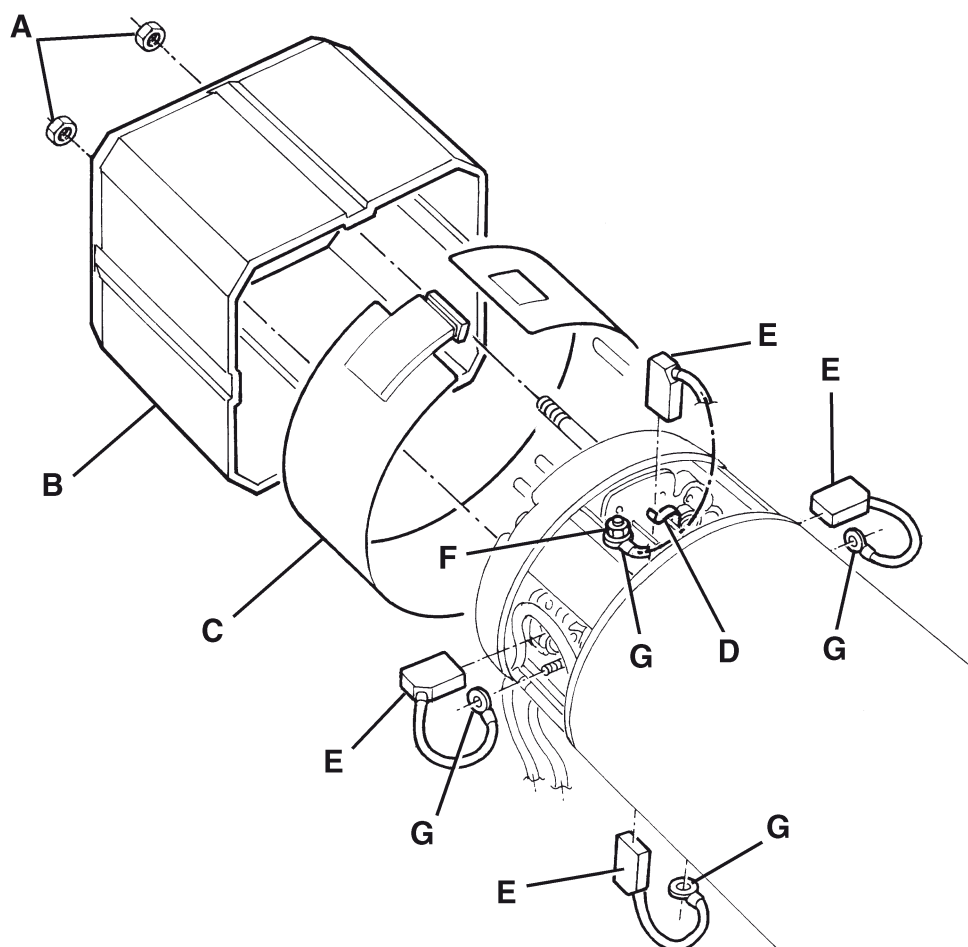
1. Remove the drive system (see the procedure in the relevant paragraph).
2. Remove the nuts (A) and the cover (B) at the cabinet bench.
3. Remove dust and dirt from the motor exterior part; then disengage and remove the clamp (C).
4. Lift the retaining spring (D) of each carbon brush, then remove the four carbon brushes (E).
5. Check the four carbon brushes for wear. The carbon brushes are worn when there is not sufficient contact with the motor armature, because of their use, of the contact surface which is not integral or because the thrust spring is broken, etc.

Replacement

6. If necessary, remove the carbon brushes to replace them, by removing the nuts (F) and disengaging the lead-in wires (G).

Reset

7. Reassemble in the reverse order of disassembly.



S301285

DRIVE SYSTEM

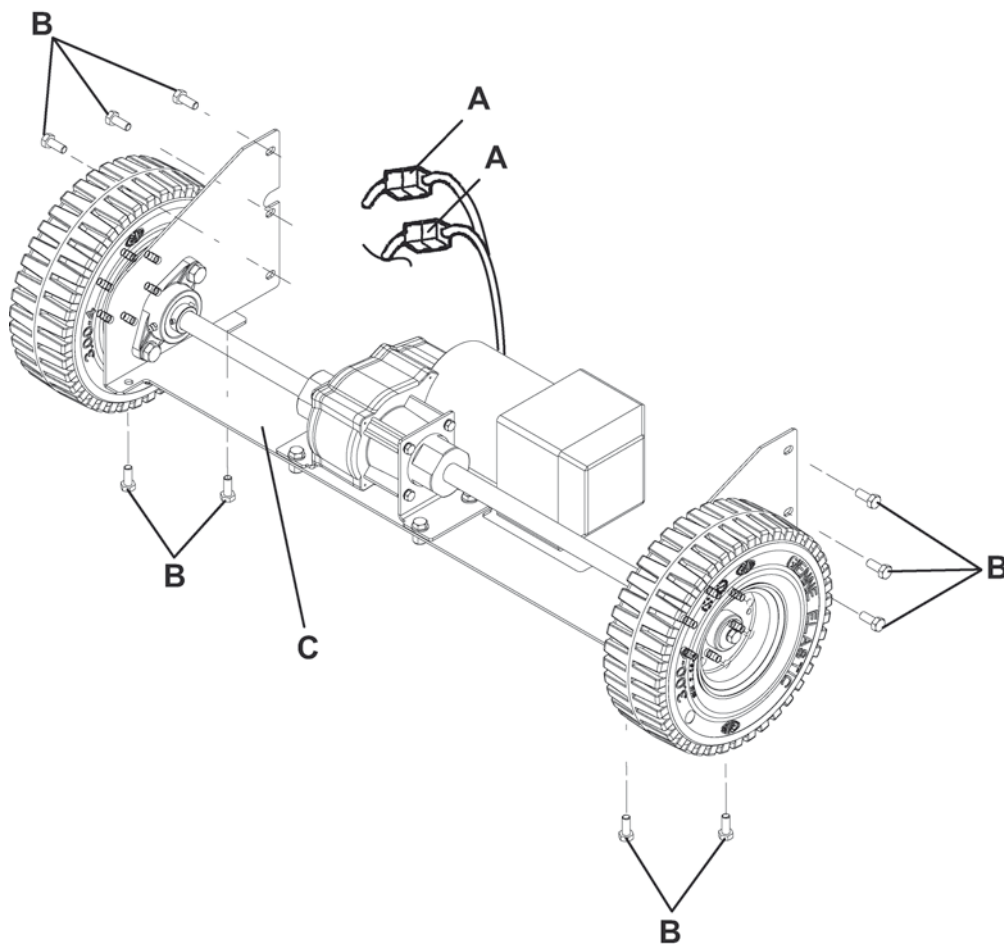
DRIVE SYSTEM DISASSEMBLY/REASSEMBLY

Disassembly

1. Drive the machine on a level ground and engage the parking brake (20 and 21).
2. Turn the ignition key (2) to "0" position.
3. Unscrew the knobs (38) and remove the left door (37).
4. Unscrew the knobs (40) and remove the right door (39).
5. Remove the waste container (34) by using the handle (36) and disengaging it from the internal guides.
6. With a proper and safe hoisting system, hook the machine on the two front lifting anchors (56), then lift it until the rear wheels (25) are at 1.5-1.9 in (4-5 cm) from the ground.
7. Apply a proper safety stand under the lifted rear frame to prevent it from lowering accidentally.
8. Disconnect the drive motor connector (A).
9. Remove the drive system fastening screws (B).
10. Remove the drive system (C).

Reassembly

11. Reassemble in the reverse order of disassembly.



S301286

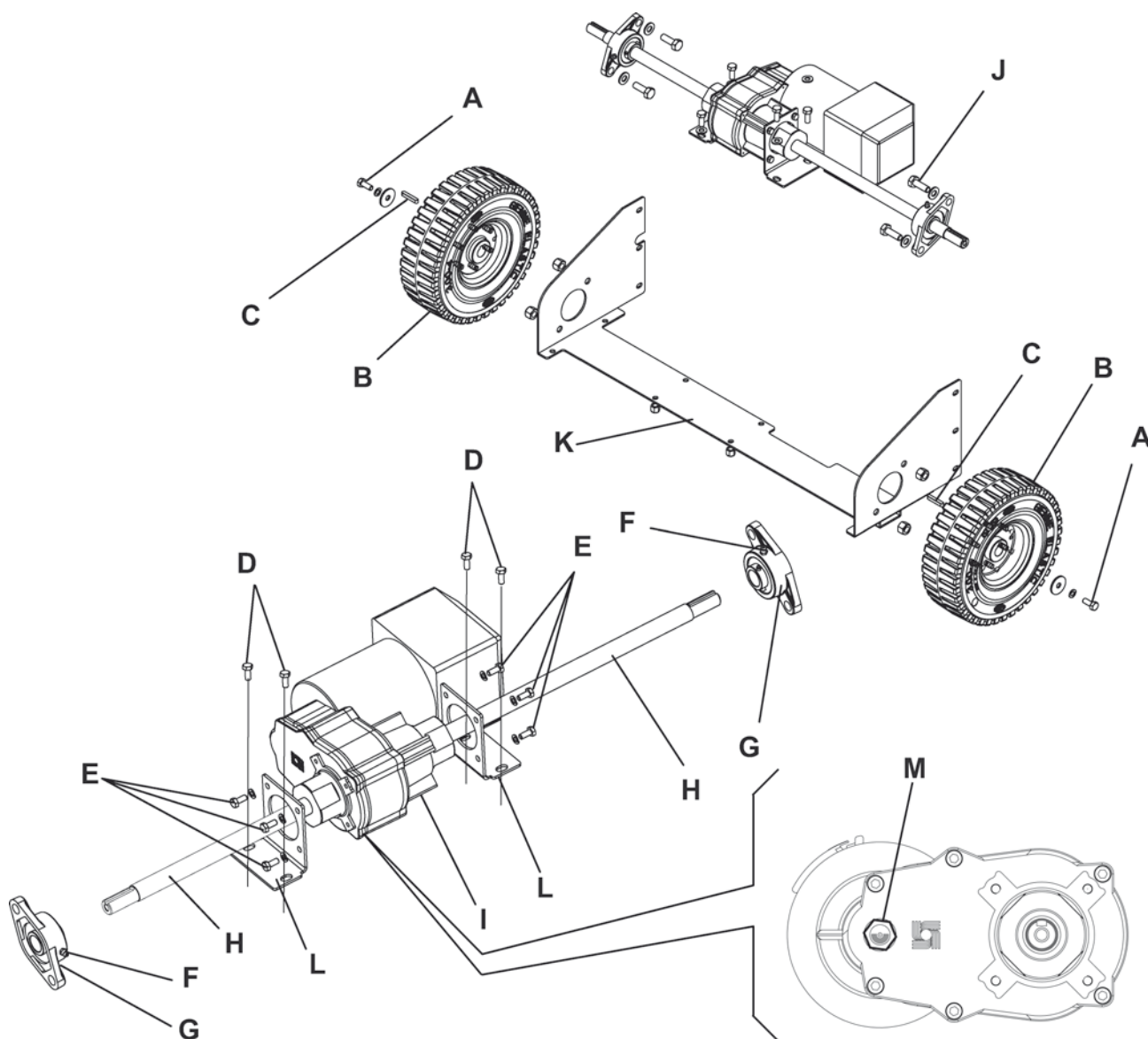
DRIVE MOTOR DISASSEMBLY/REASSEMBLY

Disassembly

1. Remove the drive system (see the procedure in the relevant paragraph).
2. At the cabinet bench, remove the screws (A) and the wheels (B), then recover the keys and the washers.
3. Remove the screws (D), (E) and (J).
4. Loosen the threaded dowels (F).
5. Slide the flanges (G) from the shafts (H) inwards.
6. Remove the reduction unit assembly (I).
7. Recover the jumper (K) and the supports (L).
8. Check the oil level of reduction (M) through the glass slit (N), the optimum oil level is when the glass slit is visible oil itself. If necessary, unscrew the screw glass slit (N), retrieve the seal and add oil of the type AGIP BLASIA 150 or equivalent.

Reassembly

8. Reassemble in the reverse order of disassembly.



S301287

DRIVE SYSTEM

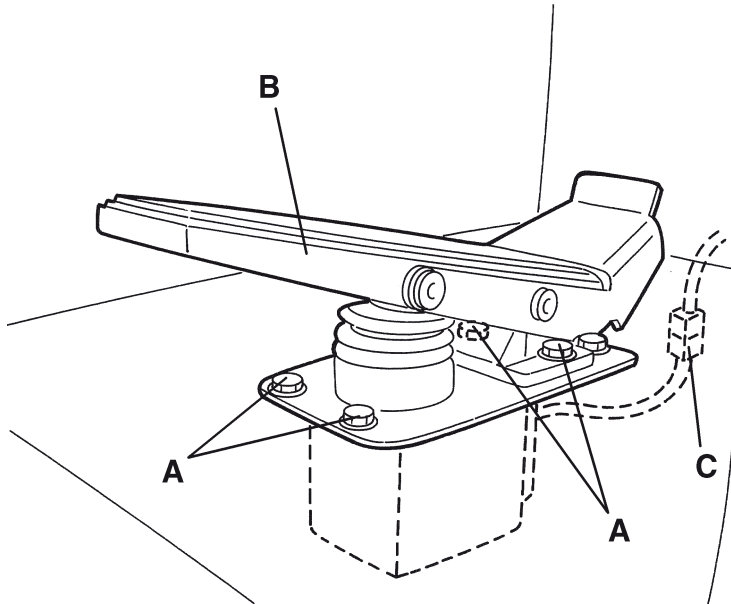
FORWARD/REVERSE GEAR PEDAL DISASSEMBLY/REASSEMBLY

Disassembly

1. Drive the machine on a level ground.
2. Engage the parking brake (20 and 21).
3. Remove the pedal fastening screws (A).
4. Slightly lift the pedal (B) and disconnect the electrical connector (C).

Reassembly

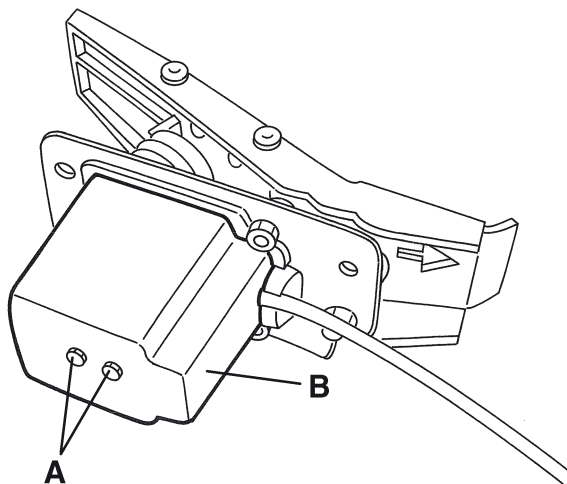
5. Reassemble in the reverse order of disassembly.



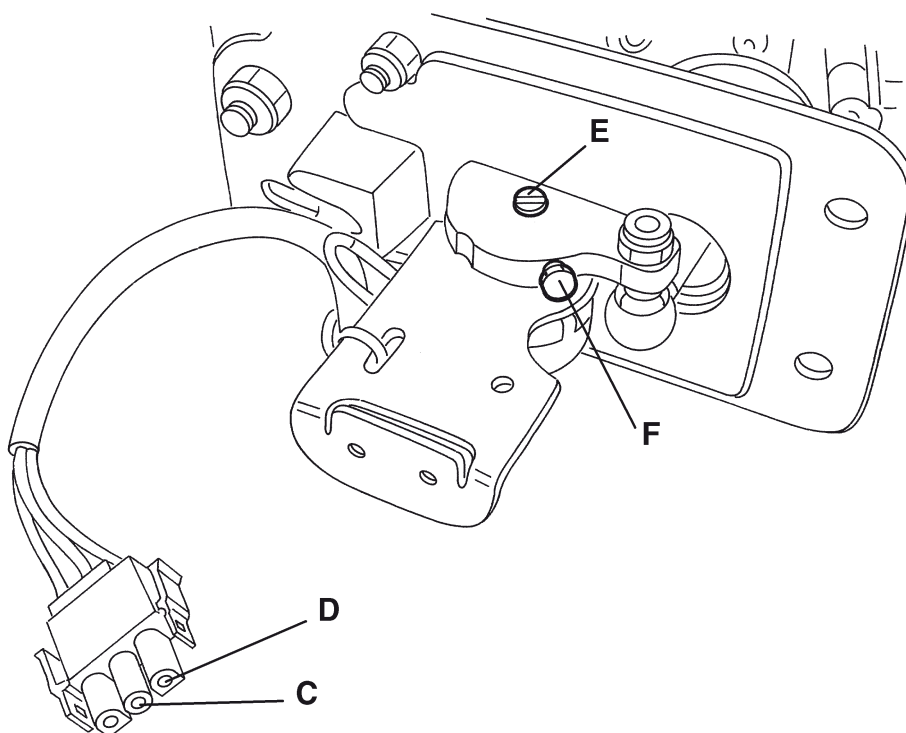
S301288

FORWARD/REVERSE GEAR PEDAL POTENTIOMETER CHECK AND ADJUSTMENT

1. Remove the forward/reverse gear pedal (see the procedure in the relevant paragraph).
2. At the cabinet bench, remove the screws (A) and the guard (B).
3. Apply the tester on the central contact (C) and on a side contact (D) of the connector; then check that the resistance is between $2,500 \pm 500$ Ohm when the pedal is not pressed.
If necessary, restore the correct resistance value operating on the potentiometer screw (E), after loosening the screw (F). Then tighten the screw (F).
4. Reinstall the guard (B) and tighten the screws (A).
5. Reinstall the forward/reverse gear pedal (see the procedure in the relevant paragraph).



S301289



S301290

DRIVE SYSTEM

TROUBLESHOOTING

THE MACHINE DOES NOT MOVE

The possible causes can be:

1. Worn motor carbon brushes (replace).
2. Faulty motor (repair or replace).
3. Broken running consent under-seat switch (replace).
4. Misadjusted or broken forward/reverse gear pedal potentiometric accelerator (adjust or replace).
5. Activated brake (deactivate)
6. Broken drive electronic board (replace).
7. Blown drive fuse (replace).

DRIVE BOARD ERROR CODES

The warning led (70) stays on when the drive system works correctly with the machine in the following conditions:

- Ignition key (2) in “I” position
- Engine running
- Operator seated on the driver’s seat (42) (seat microswitch pressed) or microswitch connector disconnected and bypassed with jumper.

Otherwise, if there is an error, the warning led (70) flashes. Then check the signalled error code according to the following table.

DRIVE SYSTEM

TABLE OF ERROR CODES SIGNALLED BY THE DRIVE BOARD LED

LED CODES			ERROR DESCRIPTION (REMEDY)
Notes	Reference	LED flashing type	
		LED off	Control system malfunction, or drive fuse (FT) blown, or seat microswitch activated, or electrical cable disconnected (check the drive board wire harness)
		LED on	Control system operating, no malfunctions detected
	1.1	□ □	Thermal protection activated (wait a few minutes for the board to cool. If the trouble persists, check the drive motor electrical input)
	1.2	□ □□	Faulty forward/reverse gear pedal (check the forward/reverse gear pedal)
	1.3	□ □□□	Wrong drive board programming (replace)
	1.4	□ □□□□	Too low voltage (check the batteries)
	1.5	□ □□□□□	Too high voltage (check the batteries)
	2.1	□□ □	Faulty main contact OFF function (replace the electronic board)
	2.3	□□ □□□	Faulty main contact (replace the electronic board)
	2.4	□□ □□□□	Faulty main contact ON function (replace the electronic board)
*	3.1	□□□ □	Forward/reverse gear pedal pressed when starting the machine (check the forward/reverse gear pedal)
	3.2	□□□ □□	Wrong drive electronic board programming (replace)
	3.3	□□□ □□□	Forward/reverse gear pedal pressed when starting the machine (check the drive motor)
	3.4	□□□ □□□□	Wrong drive electronic board programming (replace)
	3.5	□□□ □□□□□	Forward/reverse gear pedal pressed when starting the machine (check the drive motor)
*	4.1	□□□□ □	Drive motor short circuit (check the drive motor)
*	4.2	□□□□ □□	Drive motor short circuit (check the drive motor)
*	4.3	□□□□ □□□	Electronic board malfunction (replace)
*	4.4	□□□□ □□□□	Faulty electronic board (replace), or drive motor short circuit (check the drive motor)
* = Reset the system by turning the ignition key to "0" and then to "I" NOTE: Troubles are shown one at a time; other troubles are not queued.			



NOTE

For further drive board checks the CURTIS MODEL 1311-3301 HANDHELD PROGRAMMER can be referred to.

OTHER SYSTEMS

OTHER SYSTEMS

SCREW AND NUT TIGHTENING CHECK

1. Drive the machine on a level ground and engage the parking brake by means of the pedal and the lever (20 and 21).
2. Turn the ignition key (2) to "0" position.
3. Open the hood (24) with a handle (55).
4. Check the following:
 - Accessible fastening screw and nut tightening
 - Fastening component position
 - Part and component visible faults
 - Liquid leaks
5. Close the hood (24) with a handle (55).

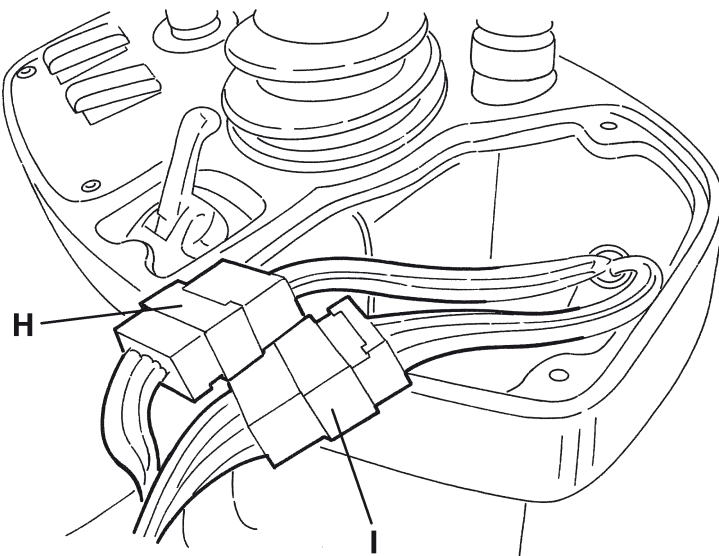
FRONT COVER DISASSEMBLY/REASSEMBLY

Disassembly

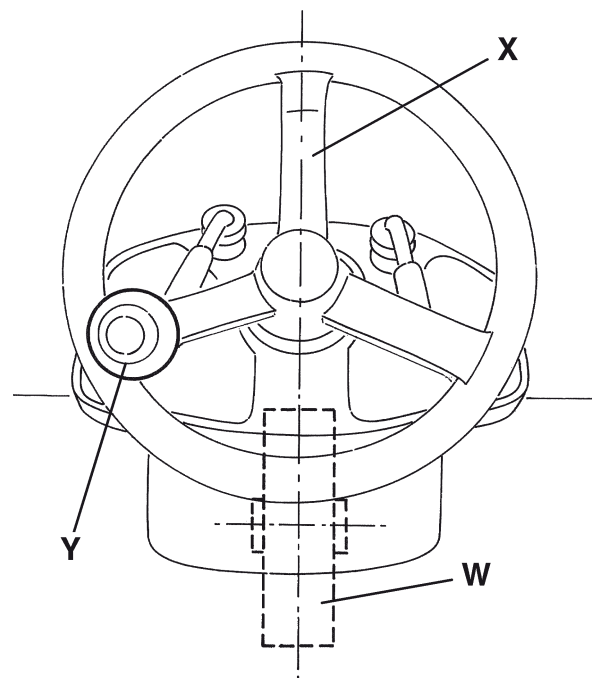
1. Drive the machine on a level ground and engage the parking brake by means of the pedal and the lever (20 and 21).
2. Turn the ignition key (2) to "0" position.
3. Remove the cap (A).
4. Unscrew the nut (B).
5. Remove the steering wheel (C) by means of a puller.
6. Remove the two bellows (D) and the screw (E).
7. Remove the two levers (F), the bellows (D) and the nuts (G).
8. Remove the screws (13) and move the panels (1) and (14).
9. Disconnect the electrical connectors (H) and (I).
10. Lift the steering wheel positioning control lever (L), disengaging the retainers (M) from its housing (N).
11. Disconnect the cable (P) terminal (O) from the lever (L).
12. Remove the screws (Q) and the support (R).
13. Reinsert the cable (S) inside the cover through the hole (T).
14. Remove the screws (U).
15. Remove the cover (V).

Reassembly

16. Install in the reverse order of removal, and note the following:
 - After reinstalling the screws (E), tighten the nut (G) to eliminate the end plays.
 - Reinstall the steering wheel (C) aligning the front wheel (W) and the steering wheel spoke (X) with the machine longitudinal axle. The spoke with the knob (Y) must be on the left side.



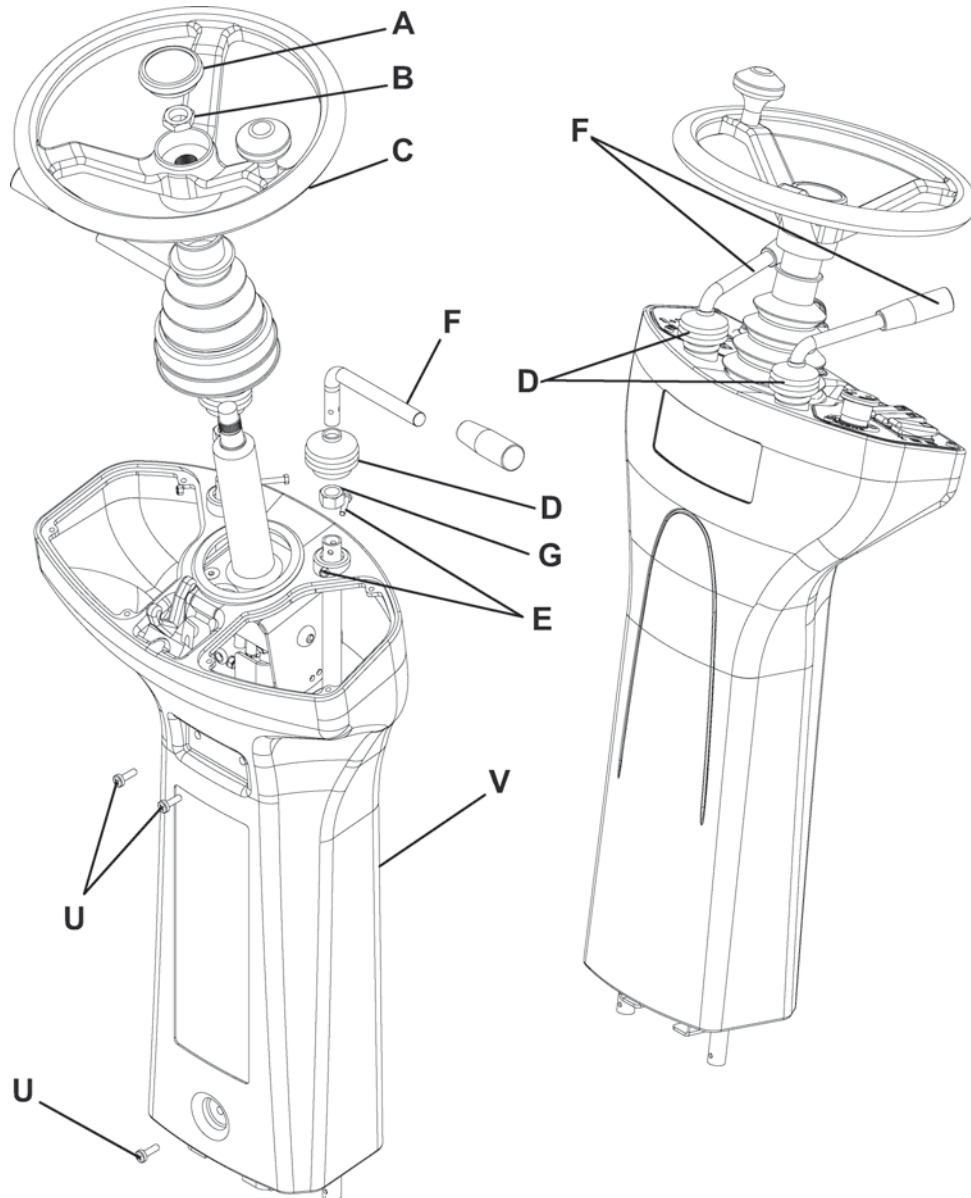
S301296



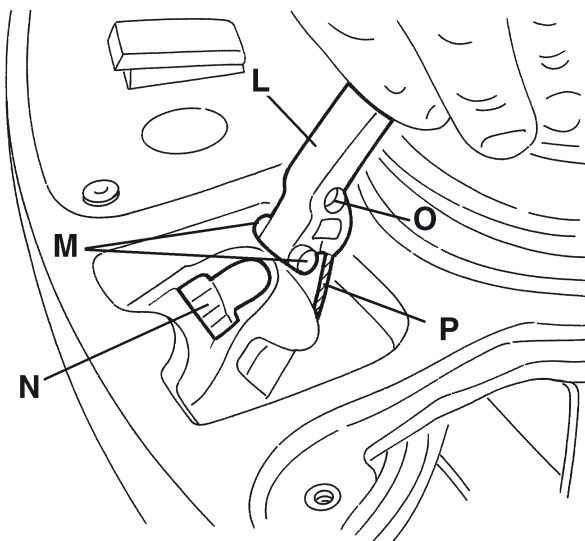
S301297

OTHER SYSTEMS

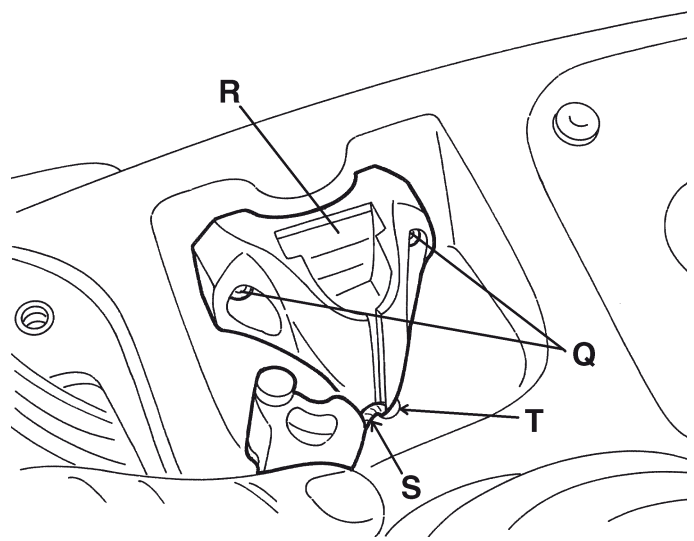
FRONT COVER DISASSEMBLY/REASSEMBLY (continues)



S301298



S301299



S301300

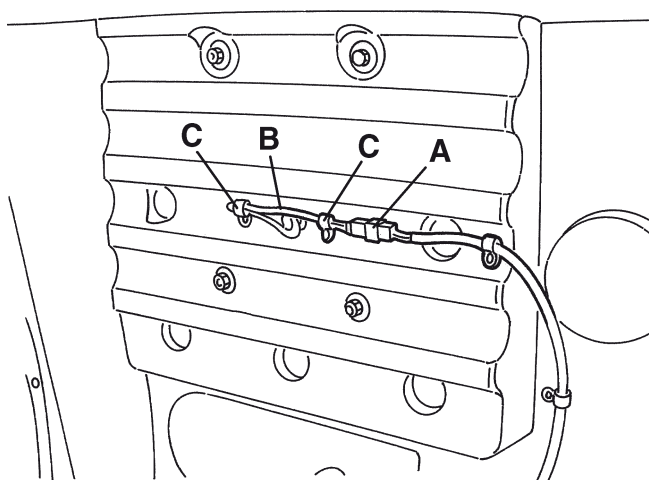
SEAT RUNNING CONSENT MICROSWITCH DISASSEMBLY/REASSEMBLY

Disassembly

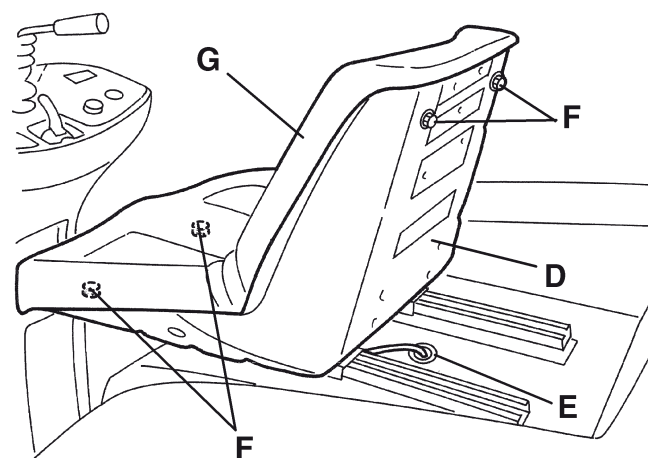
1. Drive the machine on a level ground and engage the parking brake (20 and 21).
2. Turn the ignition key (2) to "0" position.
3. Open the hood (24) with a handle (55).
4. Operating inside the hood, disconnect the seat microswitch electrical connector (A).
5. Disconnect the wire harness (B) from the retaining clamps (C).
6. Close the hood (24) with a handle (55).
7. Slide the seat forwards (D) to discover the hole (E).
8. Remove the nuts (F) and the seat stuffing (G).
9. Remove the adhesive (H) and pull out the electrical cables (I) from the seat.
10. Remove the seat microswitch (J) by detaching the adhesive (K).

Reassembly

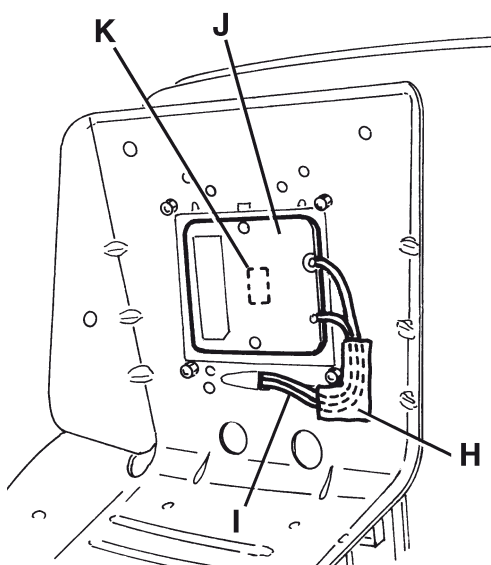
11. Reassemble in the reverse order of disassembly.
12. Check that it is not possible to start the machine when the operator is not on the seat (42).



S301301



S301302



S301303

ELECTRICAL SYSTEM

ELECTRICAL SYSTEM

BATTERY CHARGING

See User Manual.

FUSE REPLACEMENT

1. Drive the machine on a level ground and engage the parking brake (20 and 21).
2. Turn the ignition key (2) to "0" position.
3. Open the hood (24) with a handle (55).
4. Remove the box (67) cover and the concerned fuse among the following fuses:
 - F1 fuse (15 A): Main fuse (key circuit)
 - F2 fuse (25 A): Filter shaker motor
 - F3 fuse (40 A): Manual vacuum system (optional)
 - F4 fuse (30 A): Vacuum motor
 - F5 fuse (10 A): Horn and pivoting light
 - F6 fuse (10 A): Head light (optional)
 - F7 fuse (25 A): Spare fuse
 - F8 fuse (15 A): Spare fuse
5. In the electrical component box (71) remove the following fuse:
 - FT fuse (70 A): Drive system
6. Reassemble in the reverse order of disassembly.

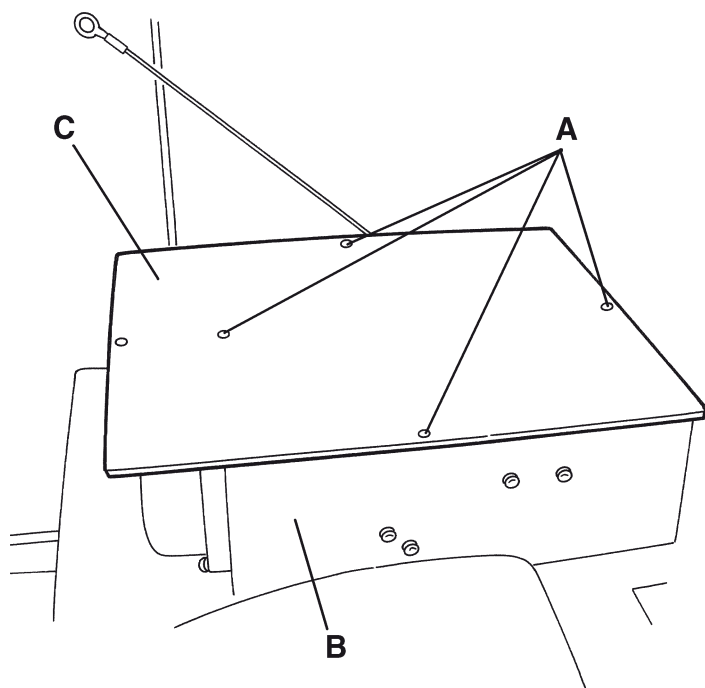
DRIVE ELECTRONIC BOARD DISASSEMBLY/REASSEMBLY

Disassembly

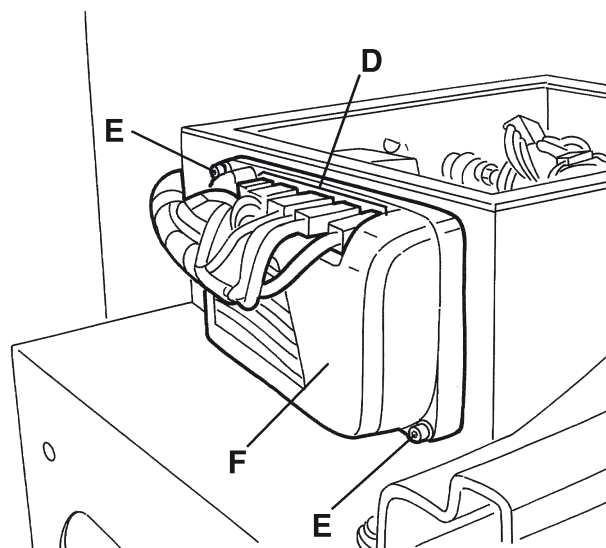
1. Drive the machine on a level ground and engage the parking brake (20 and 21).
2. Turn the ignition key (2) to "0" position.
3. Open the hood (24) with a handle (55).
4. Disconnect the battery connector (62).
5. Remove the electrical box (B) screws (A).
6. Remove the cover (C).
7. Mark the reciprocal position of the electrical connectors (D) (for the next correct reconnection); then, disconnect them.
8. Remove the screws (E) and the drive electronic board (F).

Reassembly

10. Reassemble in the reverse order of disassembly.



S301307



S301308

ELECTRICAL SYSTEM**TROUBLESHOOTING**

See the previous chapters related to the use of the electrical system.

Other possible causes:

1. Discharged battery or not-efficient connections (charge the battery or clean the connections).
2. Blown fuses (replace).
3. Faulty battery electrical connector/terminals (replace).
4. Cut or shorted to ground wire harness (repair).

COMPONENT LOCATION**Key**

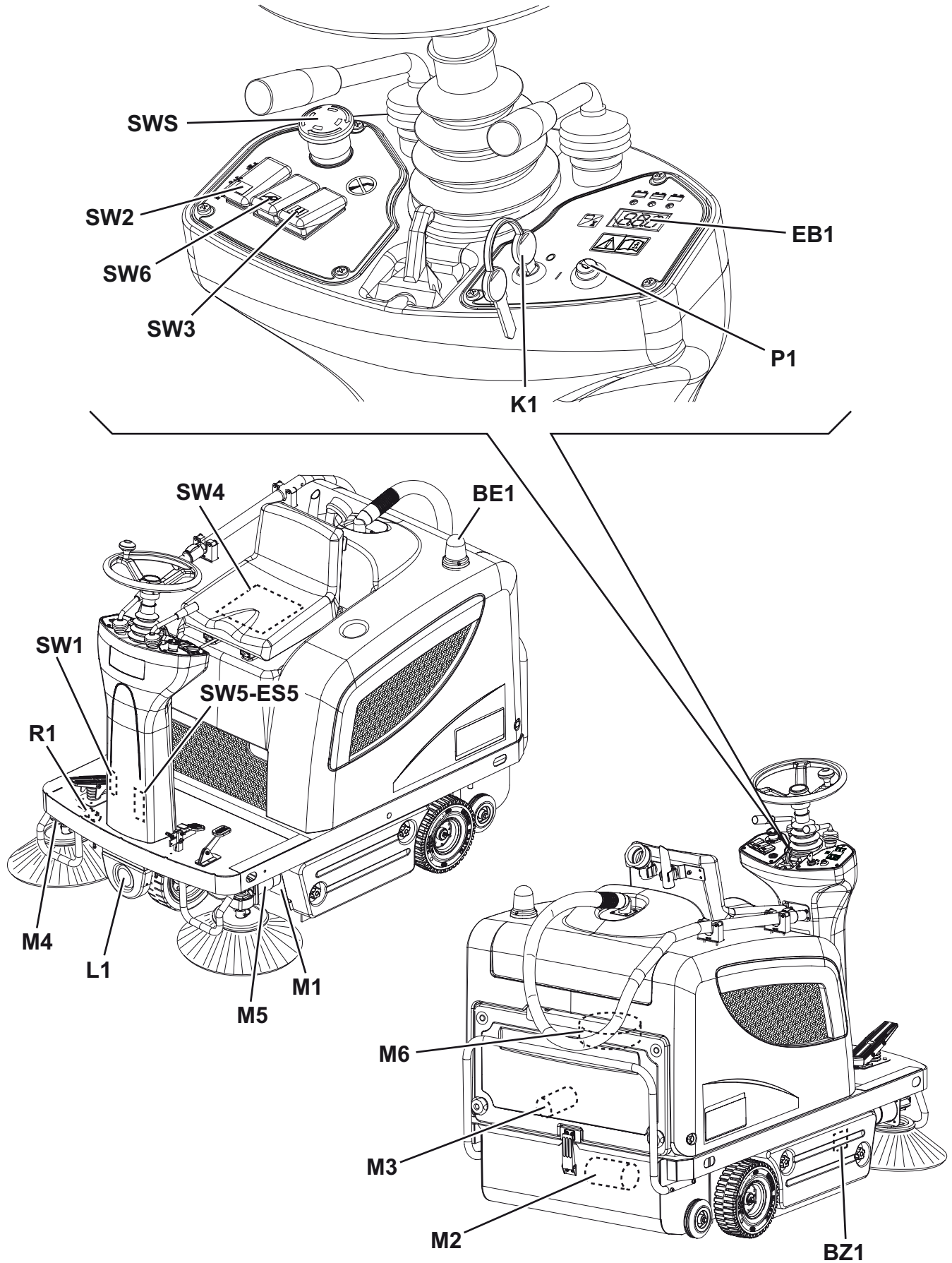
BAT	Batteries
BE1	Pivoting light (optional)
BZ1	Reverse gear warning buzzer
C1	Battery connector
C2	Battery charger secondary connector (optional)
CH1	Battery charger (optional)
EB1	Hour counter and battery voltage display
EB2	Drive electronic board
ES1	Main broom relay
ES2	Filter shaker relay
ES3	Vacuum system relay
ES4	Manual vacuum system relay (optional)
ES5	Side broom relay
FA	Main broom circuit breaker
FB	Side broom circuit breaker
FT	Drive system fuse (70 A)
F1	Main fuse (key circuit) (15 A)
F2	Filter shaker motor fuse (25 A)
F3	Manual vacuum system fuse (40 A) (optional)
F4	Vacuum motor fuse (30 A)
F5	Horn and pivoting light fuse (10 A)
F6	Head light fuse (10 A) (optional)
K1	Ignition switch
LD1	Drive electronic board diagnostic led
L1	Head light (optional)
M1	Main broom motor
M2	Drive motor
M3	Filter shaker motor
M4	Right side broom motor
M5	Left side broom motor (optional)
M6	Vacuum motor
M7	Manual vacuum motor (optional)
P1	Horn switch
R1	Drive speed potentiometer
R2	Led resistance
SWS	Emergency switch
SW1	Main broom microswitch
SW2	Vacuum/filter shaker switch
SW3	Manual vacuum system switch (optional)
SW4	Driver's seat safety microswitch
SW5	Side broom microswitch
SW6	Head light switch (optional)

Colour codes

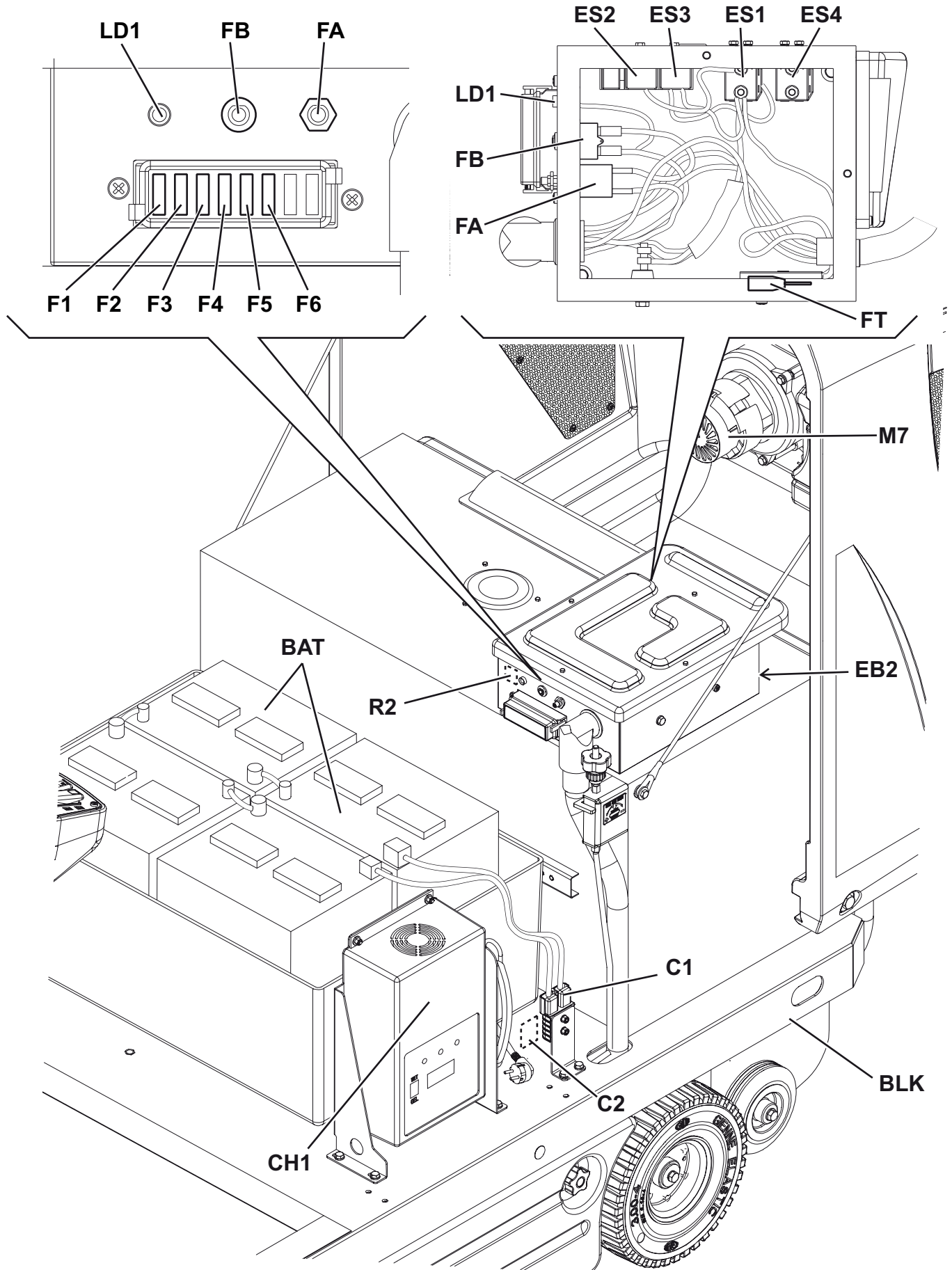
BK	Black
BU	Blue
BN	Brown
GN	Green
GY	Grey
OG	Orange
PK	Pink
RD	Red
VT	Violet
WH	White
YE	Yellow

ELECTRICAL SYSTEM

COMPONENT LOCATION (continues)



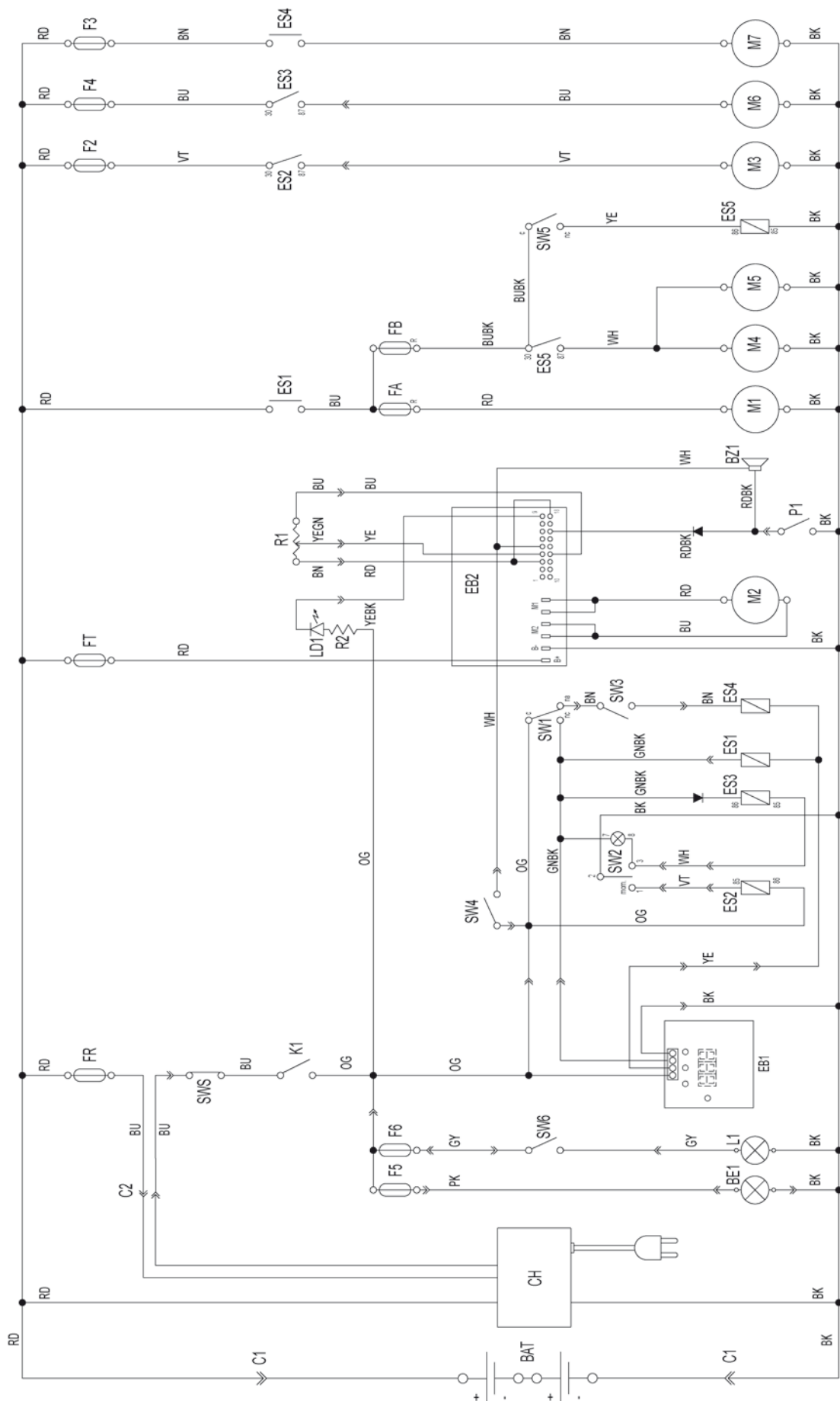
S301309

ELECTRICAL SYSTEM**COMPONENT LOCATION (continues)**

S301310

ELECTRICAL SYSTEM

WIRING DIAGRAM (continues)



S301313



**Nilfisk
Advance**

setting standards

Nilfisk-Advance, Inc.

14600 21st Avenue North
Plymouth, MN, 55447-3408
www.nilfisk-advance.com

Phone: 800-989-2235

Fax: 800-989-6566

©2009 Nilfisk-Advance, Inc.,

Plymouth, MN 55447-3408

Printed in Italy